

Product Name: CaMKII alpha Rabbit Monoclonal Antibody
Catalog #: AMRe01752

Summary

Production Name	CaMKII alpha Rabbit Monoclonal Antibody
Description	Recombinant Rabbit Monoclonal antibody
Host	Rabbit
Application	WB
Reactivity	Human,Mouse,Rat

Performance

Conjugation	Unconjugated
Modification	Unmodified
Isotype	IgG
Clonality	Monoclonal Antibody
Form	Liquid
Storage	Store at 4°C short term. Aliquot and store at -20°C long term. Avoid freeze/thaw cycles.
Buffer	50mM Tris-Glycine(pH 7.4), 0.15M NaCl, 40% Glycerol, 0.01% Sodium azide and 0.05% BSA
Purification	Affinity Purified

Immunogen

Gene Name	CAMK2A CAMK2A; CAMKA; KIAA0968; Calcium/calmodulin-dependent protein kinase type II subunit alpha; CaM kinase II subunit alpha; CaMK-II subunit alpha; CAMK2B; CAM2;
Alternative Names	CAMK2; CAMKB; Calcium/calmodulin-dependent protein kinase type II subunit beta; Ca
Gene ID	815
SwissProt ID	Q9UQM7

Application

Dilution Ratio	WB: 1/500-1/1000
-----------------------	------------------

Product Name: CaMKII alpha Rabbit Monoclonal Antibody
Catalog #: AMRe01752

Molecular Weight

Calculated MW: 54 kDa; Observed MW: 54 kDa

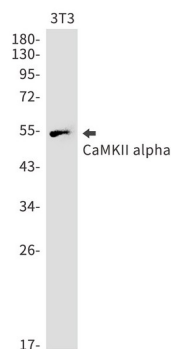
Background

CaM-kinase II (CAMK2) is a prominent kinase in the central nervous system that may function in long-term potentiation and neurotransmitter release. Member of the NMDAR signaling complex in excitatory synapses it may regulate NMDAR-dependent potentiation of the AMPAR and synaptic plasticity.

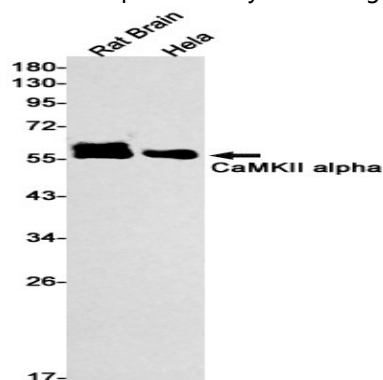
Research Area

Neuroscience

Image Data



Western blot analysis of CaMKII alpha in 3T3 lysates using CaMKII alpha antibody.



Western blot analysis of CaMKII alpha in rat Brain, HeLa lysates using CaMKII alpha antibody.

Note

For research use only.

**Product Name: CaMKII alpha Rabbit Monoclonal
Antibody**
Catalog #: AMRe01752

