
Summary

Production Name	Calbindin Rabbit Monoclonal Antibody
Description	Recombinant Rabbit Monoclonal antibody
Host	Rabbit
Application	WB,IHC-P,IP
Reactivity	Human,Mouse,Rat

Performance

Conjugation	Unconjugated
Modification	Unmodified
Isotype	IgG
Clonality	Monoclonal Antibody
Form	Liquid
Storage	Store at 4°C short term. Aliquot and store at -20°C long term. Avoid freeze/thaw cycles.
Buffer	50mM Tris-Glycine(pH 7.4), 0.15M NaCl, 40% Glycerol, 0.01% Sodium azide and 0.05% BSA
Purification	Affinity Purified

Immunogen

Gene Name	Calb1
Alternative Names	Calbindin
Gene ID	12307.0
SwissProt ID	P12658

Application

Dilution Ratio	WB: 1/500-1/1000 IHC: 1/50-1/100 IP: 1/20
Molecular Weight	Calculated MW: 30 kDa; Observed MW: 30 kDa

Background

Product Name: Calbindin Rabbit Monoclonal Antibody
Catalog #: AMRe01748

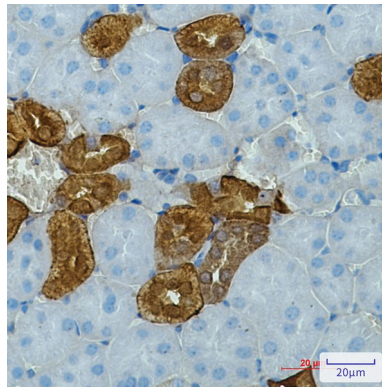


Buffers cytosolic calcium. May stimulate a membrane Ca^{2+} -ATPase and a 3',5'-cyclic nucleotide phosphodiesterase.

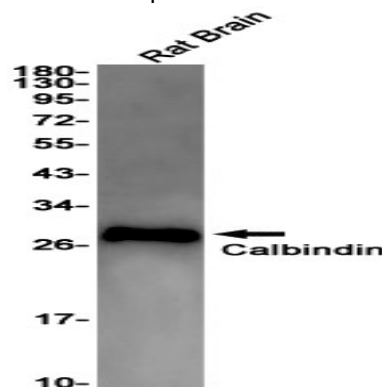
Research Area

Neuroscience

Image Data



Immunohistochemistry analysis of paraffin-embedded mouse kidney using Calbindin antibody. High-pressure and temperature Sodium Citrate pH 6.0 was used for antigen retrieval.



Western blot analysis of Calbindin in rat Brain lysates using Calbindin antibody.

Note

For research use only.