

## Summary

<b>Production Name</b>	BRAT1 Rabbit Monoclonal Antibody
<b>Description</b>	Recombinant Rabbit Monoclonal antibody
<b>Host</b>	Rabbit
<b>Application</b>	WB,ICC/IF,IP
<b>Reactivity</b>	Human

## Performance

<b>Conjugation</b>	Unconjugated
<b>Modification</b>	Unmodified
<b>Isotype</b>	IgG
<b>Clonality</b>	Monoclonal Antibody
<b>Form</b>	Liquid
<b>Storage</b>	Store at 4°C short term. Aliquot and store at -20°C long term. Avoid freeze/thaw cycles.
<b>Buffer</b>	50mM Tris-Glycine(pH 7.4), 0.15M NaCl, 40% Glycerol, 0.01% Sodium azide and 0.05% BSA
<b>Purification</b>	Affinity Purified

## Immunogen

<b>Gene Name</b>	BRAT1
<b>Alternative Names</b>	BRCA1-associated ATM activator 1; BRCA1-associated protein required for ATM activation protein 1
<b>Gene ID</b>	221927
<b>SwissProt ID</b>	Q6PJG6

## Application

<b>Dilution Ratio</b>	WB: 1/500-1/1000 IF: 1/50-1/200 IP: 1/20
<b>Molecular Weight</b>	Calculated MW: 88 kDa; Observed MW: 88 kDa

**Product Name: BRAT1 Rabbit Monoclonal Antibody**  
**Catalog #: AMRe01735**



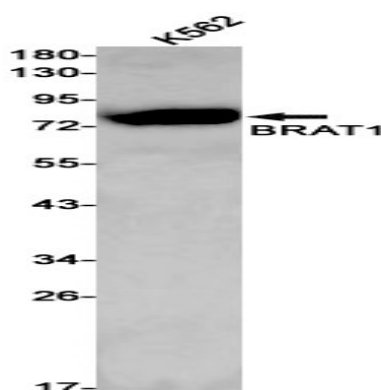
## Background

Involved in DNA damage response; activates kinases ATM, SMC1A and PRKDC by modulating their phosphorylation status following ionizing radiation (IR) stress (PubMed:16452482, PubMed:22977523). Plays a role in regulating mitochondrial function and cell proliferation (PubMed:25070371). Required for protein stability of MTOR and MTOR-related proteins, and cell cycle progress by growth factors (PubMed:25657994).

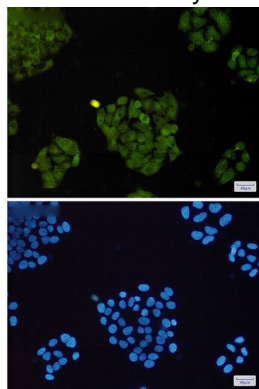
## Research Area

Epigenetics and Nuclear Signaling

## Image Data



Western blot analysis of BRAT1 in K562 lysates using BRAT1 antibody.



Immunocytochemistry analysis of BRAT1(green) in HeLa using BRAT1 antibody, and DAPI(blue)

## Note

For research use only.