
Summary

| | |
|------------------------|--|
| Production Name | BMP2 Rabbit Monoclonal Antibody |
| Description | Recombinant Rabbit Monoclonal antibody |
| Host | Rabbit |
| Application | WB,ICC/IF |
| Reactivity | Human |

Performance

| | |
|---------------------|--|
| Conjugation | Unconjugated |
| Modification | Unmodified |
| Isotype | IgG |
| Clonality | Monoclonal Antibody |
| Form | Liquid |
| Storage | Store at 4°C short term. Aliquot and store at -20°C long term. Avoid freeze/thaw cycles. |
| Buffer | 50mM Tris-Glycine(pH 7.4), 0.15M NaCl, 40% Glycerol, 0.01% Sodium azide and 0.05% BSA |
| Purification | Affinity Purified |

Immunogen

| | |
|--------------------------|---|
| Gene Name | BMP2 |
| Alternative Names | BMP2; BMP2A; Bone morphogenetic protein 2; BMP-2; Bone morphogenetic protein 2A; BMP-2A |
| Gene ID | 650 |
| SwissProt ID | P12643 |

Application

| | |
|-------------------------|--|
| Dilution Ratio | WB: 1/500-1/1000 IF: 1/50-1/200 |
| Molecular Weight | Calculated MW: 45 kDa; Observed MW: 30 kDa |

Product Name: BMP2 Rabbit Monoclonal Antibody
Catalog #: AMRe01730



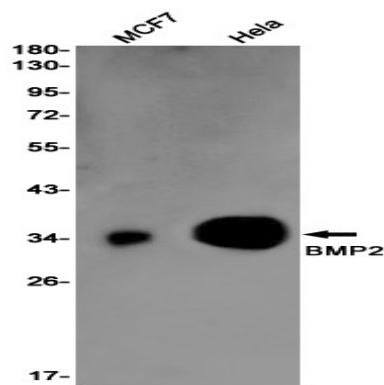
Background

Bone morphogenic proteins (BMPs) are members of the TGF β superfamily. BMPs are involved in the induction of cartilage and bone formation. Induces cartilage and bone formation.

Research Area

Cancer

Image Data



Western blot analysis of BMP2 in MCF-7, HeLa lysates using BMP2 antibody.

Note

For research use only.