

Summary

Production Name	BAP31 Rabbit Monoclonal Antibody
Description	Recombinant Rabbit Monoclonal antibody
Host	Rabbit
Application	WB,IHC-F,IHC-P,ICC/IF
Reactivity	Human,Mouse

Performance

Conjugation	Unconjugated
Modification	Unmodified
Isotype	IgG
Clonality	Monoclonal Antibody
Form	Liquid
Storage	Store at 4°C short term. Aliquot and store at -20°C long term. Avoid freeze/thaw cycles.
Buffer	50mM Tris-Glycine(pH 7.4), 0.15M NaCl, 40% Glycerol, 0.01% Sodium azide and 0.05% BSA
Purification	Affinity Purified

Immunogen

Gene Name	BCAP31
Alternative Names	BCAP31; BAP31; DXS1357E; B-cell receptor-associated protein 31; BCR-associated protein 31; Bap31; 6C6-AG tumor-associated antigen; Protein CDM; p28
Gene ID	10134
SwissProt ID	P51572

Application

Dilution Ratio	WB: 1/500-1/1000 IHC: 1/50-1/100 IF: 1/50-1/200
Molecular Weight	Calculated MW: 28 kDa; Observed MW: 28 kDa

Product Name: BAP31 Rabbit Monoclonal Antibody
Catalog #: AMRe01716



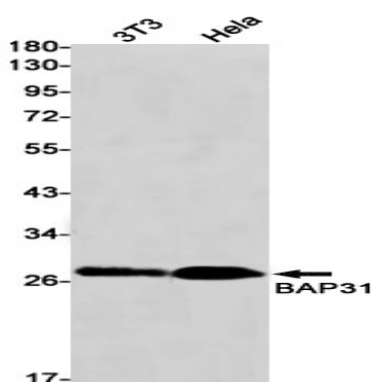
Background

May play a role in anterograde transport of membrane proteins from the endoplasmic reticulum to the Golgi. May be involved in CASP8-mediated apoptosis.

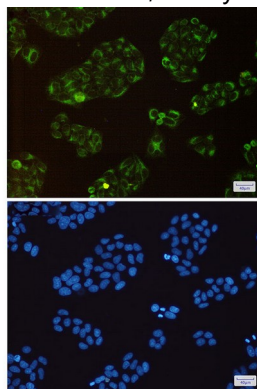
Research Area

Cell Biology

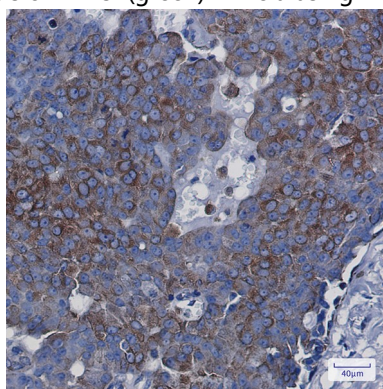
Image Data



Western blot analysis of BAP31 in K562, HeLa lysates using BAP31 antibody.



Immunocytochemistry analysis of BAP31 (green) in HeLa using BAP31 antibody, and DAPI (blue)



Immunohistochemistry analysis of paraffin-embedded Human breast cancer using BAP31 antibody. High-pressure and

Product Name: BAP31 Rabbit Monoclonal Antibody
Catalog #: AMRe01716



temperature Sodium Citrate pH 6.0 was used for antigen retrieval.

Note

For research use only.