

Summary

Production Name	ASS1 Rabbit Monoclonal Antibody
Description	Recombinant Rabbit Monoclonal antibody
Host	Rabbit
Application	WB,IHC-F,IHC-P,ICC/IF,IP
Reactivity	Human,Rat

Performance

Conjugation	Unconjugated
Modification	Unmodified
Isotype	IgG
Clonality	Monoclonal Antibody
Form	Liquid
Storage	Store at 4°C short term. Aliquot and store at -20°C long term. Avoid freeze/thaw cycles.
Buffer	50mM Tris-Glycine(pH 7.4), 0.15M NaCl, 40% Glycerol, 0.01% Sodium azide and 0.05% BSA
Purification	Affinity Purified

Immunogen

Gene Name	ASS1
Alternative Names	Argininosuccinate synthase 1; ASS; ass1; ASSA; Citrulline aspartate ligase; CTLN1
Gene ID	445
SwissProt ID	P00966

Application

Dilution Ratio	WB: 1/500-1/1000 IHC: 1/50-1/100 IF: 1/50-1/200 IP: 1/20
Molecular Weight	Calculated MW: 47 kDa; Observed MW: 47 kDa

Background

Product Name: ASS1 Rabbit Monoclonal Antibody
Catalog #: AMRe01685

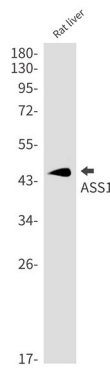


Amino-acid biosynthesis; L-arginine biosynthesis; L-arginine from L-ornithine and carbamoyl phosphate: step 2/3. Nitrogen metabolism; urea cycle; (N(omega)-L-arginino)succinate from L-aspartate and L-citrulline: step 1/1.

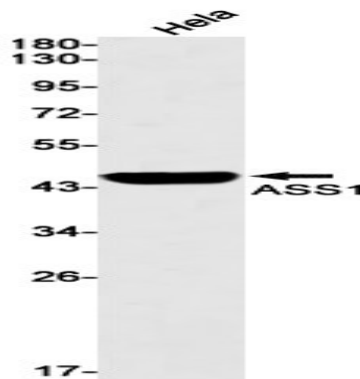
Research Area

Signal Transduction

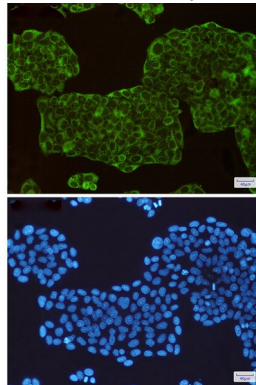
Image Data



Western blot analysis of ASS1 in rat liver lysates using ASS1 antibody.

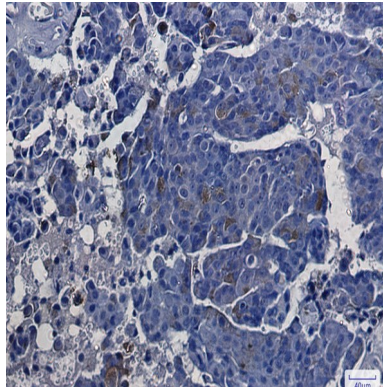


Western blot analysis of ASS1 in HeLa lysates using ASS1 antibody.



Immunocytochemistry analysis of ASS1(green) in HeLa using ASS1 antibody, and DAPI(blue)

Product Name: ASS1 Rabbit Monoclonal Antibody
Catalog #: AMRe01685



Immunohistochemistry analysis of paraffin-embedded Human breast cancer using ASS1 antibody. High-pressure and temperature Sodium Citrate pH 6.0 was used for antigen retrieval.

Note

For research use only.