

Summary

Production Name	ERAP1 Rabbit Monoclonal Antibody
Description	Recombinant Rabbit Monoclonal antibody
Host	Rabbit
Application	WB,IHC-P
Reactivity	Human,Rat

Performance

Conjugation	Unconjugated
Modification	Unmodified
Isotype	IgG
Clonality	Monoclonal Antibody
Form	Liquid
Storage	Store at 4°C short term. Aliquot and store at -20°C long term. Avoid freeze/thaw cycles.
Buffer	50mM Tris-Glycine(pH 7.4), 0.15M NaCl, 40% Glycerol, 0.01% Sodium azide and 0.05% BSA
Purification	Affinity Purified

Immunogen

Gene Name	ERAP1 ERAP1; APPILS; ARTS1; KIAA0525; Endoplasmic reticulum aminopeptidase 1; ARTS-1;
Alternative Names	Adipocyte-derived leucine aminopeptidase; A-LAP; Aminopeptidase PILS; Puromycin-insensitive leucyl-specific aminopeptidase; PILS-AP; Type 1 tumor necrosis facto
Gene ID	51752
SwissProt ID	Q9NZ08

Application

Dilution Ratio	WB: 1/500-1/1000 IHC: 1/50-1/100
Molecular Weight	Calculated MW: 107 kDa; Observed MW: 107 kDa

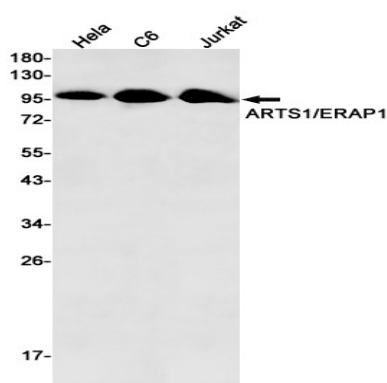
Background

Aminopeptidase that plays a central role in peptide trimming, a step required for the generation of most HLA class I-binding peptides. Peptide trimming is essential to customize longer precursor peptides to fit them to the correct length required for presentation on MHC class I molecules. Strongly prefers substrates 9-16 residues long.

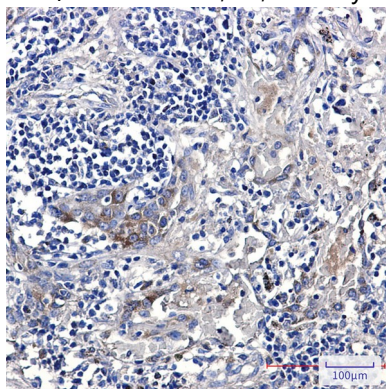
Research Area

Immunology

Image Data



Western blot analysis of ARTS1/ERAP1 in HeLa, C6, Jurkat lysates using ERAP1 antibody.



Immunohistochemistry analysis of paraffin-embedded Human lung cancer using ARTS1 antibody. High-pressure and temperature Sodium Citrate pH 6.0 was used for antigen retrieval.

Note

For research use only.