

Product Name: Aquaporin 2 Rabbit Monoclonal Antibody
Catalog #: AMRe01669

Summary

Production Name	Aquaporin 2 Rabbit Monoclonal Antibody
Description	Recombinant Rabbit Monoclonal antibody
Host	Rabbit
Application	WB,IHC-P,IP
Reactivity	Human

Performance

Conjugation	Unconjugated
Modification	Unmodified
Isotype	IgG
Clonality	Monoclonal Antibody
Form	Liquid
Storage	Store at 4°C short term. Aliquot and store at -20°C long term. Avoid freeze/thaw cycles.
Buffer	50mM Tris-Glycine(pH 7.4), 0.15M NaCl, 40% Glycerol, 0.01% Sodium azide and 0.05% BSA
Purification	Affinity Purified

Immunogen

Gene Name	AQP2
Alternative Names	AQP-CD; WCH-CD
Gene ID	359
SwissProt ID	P41181

Application

Dilution Ratio	WB: 1/500-1/1000 IHC: 1/50-1/100 IP: 1/20
Molecular Weight	Calculated MW: 29 kDa; Observed MW: 37 kDa

Product Name: Aquaporin 2 Rabbit Monoclonal Antibody
Catalog #: AMRe01669

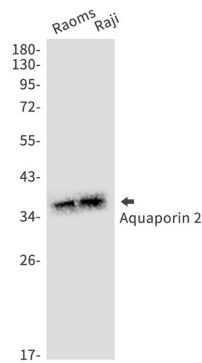
Background

The basic job of aquaporin 2 is to reabsorb water from the urine while its being removed from the blood by the kidney. Aquaporin 2 is in kidney epithelial cells and usually lies dormant in intracellular vesicle membranes, but when it is needed vasopressin binds to the cell surface vasopressin receptor, activating a signaling pathway that causes the aquaporin 2 containing vesicles to fuse with the plasma membrane so the aquaporin 2 can be used by the cell.

Research Area

Cell Biology

Image Data



Western blot analysis of Aquaporin 2 in Raoms, Raji lysates using Aquaporin 2 antibody.

Note

For research use only.