
Summary

Production Name	APG5L Rabbit Monoclonal Antibody
Description	Recombinant Rabbit Monoclonal antibody
Host	Rabbit
Application	WB,ICC/IF,IP
Reactivity	Human,Mouse,Rat

Performance

Conjugation	Unconjugated
Modification	Unmodified
Isotype	IgG
Clonality	Monoclonal Antibody
Form	Liquid
Storage	Store at 4°C short term. Aliquot and store at -20°C long term. Avoid freeze/thaw cycles.
Buffer	50mM Tris-Glycine(pH 7.4), 0.15M NaCl, 40% Glycerol, 0.01% Sodium azide and 0.05% BSA
Purification	Affinity Purified

Immunogen

Gene Name	ATG5
Alternative Names	APG 5L; APG5; APG5 autophagy 5 like; APG5 like; APG5-like; Apoptosis specific protein; ASP; ATG 5; ATG5 autophagy related 5 homolog; Autophagy protein 5; hAPG5
Gene ID	9474
SwissProt ID	Q9H1Y0

Application

Dilution Ratio	WB: 1/500-1/1000 IF: 1/50-1/200 IP: 1/20
Molecular Weight	Calculated MW: 32 kDa; Observed MW: 55 kDa

Product Name: APG5L Rabbit Monoclonal Antibody
Catalog #: AMRe01662



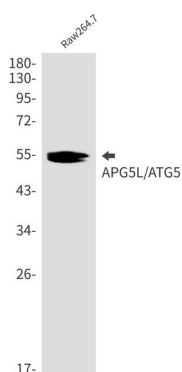
Background

Required for autophagy. Conjugates to ATG12 and associates with isolation membrane to form cup-shaped isolation membrane and autophagosome. Involved in mitochondrial quality control after oxidative damage, and in subsequent cellular longevity.

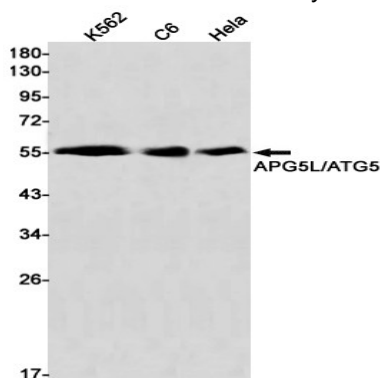
Research Area

Cell Biology

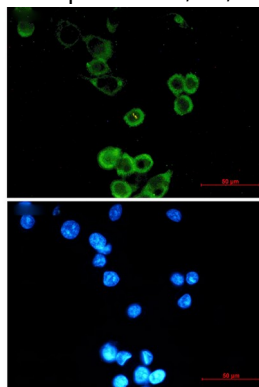
Image Data



Western blot analysis of APG5L/ATG5 in Raw264.7 lysates using APG5L antibody.



Western blot analysis of APG5L/ATG5 Rabbit pA in K562, C6, HeLa lysates using APG5L/ATG5 antibody.



Product Name: APG5L Rabbit Monoclonal Antibody
Catalog #: AMRe01662



Immunocytochemistry analysis of APG5L/ATG5 (green) in MCF-7 using APG5L/ATG5 antibody, and DAPI (blue)

Note

For research use only.