

---

## Summary

<b>Production Name</b>	ATG12 Rabbit Monoclonal Antibody
<b>Description</b>	Recombinant Rabbit Monoclonal antibody
<b>Host</b>	Rabbit
<b>Application</b>	WB
<b>Reactivity</b>	Human,Mouse

## Performance

<b>Conjugation</b>	Unconjugated
<b>Modification</b>	Unmodified
<b>Isotype</b>	IgG
<b>Clonality</b>	Monoclonal Antibody
<b>Form</b>	Liquid
<b>Storage</b>	Store at 4°C short term. Aliquot and store at -20°C long term. Avoid freeze/thaw cycles.
<b>Buffer</b>	50mM Tris-Glycine(pH 7.4), 0.15M NaCl, 40% Glycerol, 0.01% Sodium azide and 0.05% BSA
<b>Purification</b>	Affinity Purified

## Immunogen

<b>Gene Name</b>	ATG12
<b>Alternative Names</b>	APG12-like; APG12L; ATG12; Autophagy 12; Autophagy-related protein 12; FBR93; HAPG12; Ubiquitin-like protein ATG12
<b>Gene ID</b>	9140
<b>SwissProt ID</b>	O94817

## Application

<b>Dilution Ratio</b>	WB: 1/500-1/1000
<b>Molecular Weight</b>	Calculated MW: 15 kDa; Observed MW: 55 kDa

**Product Name: ATG12 Rabbit Monoclonal Antibody**  
**Catalog #: AMRe01661**



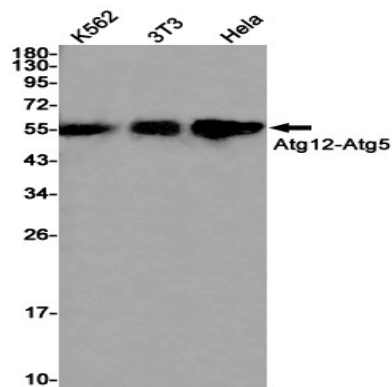
## Background

Ubiquitin-like protein required for autophagy. Conjugated to ATG3 and ATG5.

## Research Area

Cell Biology

## Image Data



Western blot analysis of Apg12 in K562, 3T3, HeLa lysates using ATG12 antibody.

## Note

For research use only.