

Product Name: AP3M1 Rabbit Monoclonal Antibody
Catalog #: AMRe01658



Summary

Production Name	AP3M1 Rabbit Monoclonal Antibody
Description	Recombinant Rabbit Monoclonal antibody
Host	Rabbit
Application	WB
Reactivity	Human,Mouse,Rat

Performance

Conjugation	Unconjugated
Modification	Unmodified
Isotype	IgG
Clonality	Monoclonal Antibody
Form	Liquid
Storage	Store at 4°C short term. Aliquot and store at -20°C long term. Avoid freeze/thaw cycles.
Buffer	50mM Tris-Glycine(pH 7.4), 0.15M NaCl, 40% Glycerol, 0.01% Sodium azide and 0.05% BSA
Purification	Affinity Purified

Immunogen

Gene Name	AP3M1
Alternative Names	AP-3 adaptor complex mu3A subunit; Adaptor-related protein complex 3 subunit mu-1; Mu-adaptin 3A; Mu3A-adaptin
Gene ID	26985
SwissProt ID	Q9Y2T2

Application

Dilution Ratio	WB: 1/500-1/1000
Molecular Weight	Calculated MW: 47 kDa; Observed MW: 47 kDa

Product Name: AP3M1 Rabbit Monoclonal Antibody
Catalog #: AMRe01658



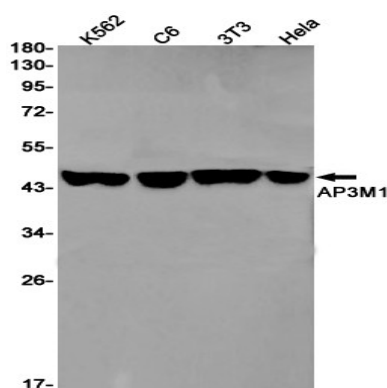
Background

Part of the AP-3 complex, an adaptor-related complex which is not clathrin-associated. The complex is associated with the Golgi region as well as more peripheral structures. It facilitates the budding of vesicles from the Golgi membrane and may be directly involved in trafficking to lysosomes. In concert with the BLOC-1 complex, AP-3 is required to target cargos into vesicles assembled at cell bodies for delivery into neurites and nerve terminals.

Research Area

Signal Transduction

Image Data



Western blot analysis of AP3M1 in K562, C6, 3T3, HeLa lysates using AP3M1 antibody.

Note

For research use only.