

**Product Name: Phospho-AP2M1 (Thr156) Rabbit
Monoclonal Antibody
Catalog #: AMRe01657**

Summary

Production Name	Phospho-AP2M1 (Thr156) Rabbit Monoclonal Antibody
Description	Recombinant Rabbit Monoclonal antibody
Host	Rabbit
Application	WB
Reactivity	Human

Performance

Conjugation	Unconjugated
Modification	Phosphorylated
Isotype	IgG
Clonality	Monoclonal Antibody
Form	Liquid
Storage	Store at 4°C short term. Aliquot and store at -20°C long term. Avoid freeze/thaw cycles.
Buffer	50mM Tris-Glycine(pH 7.4), 0.15M NaCl, 40% Glycerol, 0.01% Sodium azide and 0.05% BSA
Purification	Affinity Purified

Immunogen

Gene Name	AP2M1 AP-2 complex subunit mu; AP-2 mu chain; Adapter-related protein complex 2 subunit mu; Adaptin-mu2; Clathrin assembly protein complex 2 mu medium chain; Clathrin coat assembly protein AP50
Alternative Names	
Gene ID	1173
SwissProt ID	Q96CW1

Application

Dilution Ratio	WB: 1/500-1/1000
Molecular Weight	Calculated MW: 50 kDa; Observed MW: 50 kDa

Product Name: Phospho-AP2M1 (Thr156) Rabbit Monoclonal Antibody
Catalog #: AMRe01657

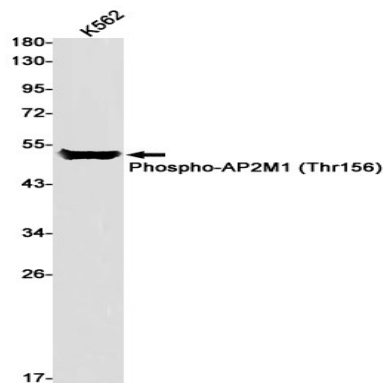
Background

Adaptins are heterotetrameric subunits of adaptors, which are complexes involved in the formation of Clathrin-coated pits for vesicle-mediated endocytosis. Involved in clathrin-dependent endocytosis in which cargo proteins are incorporated into vesicles surrounded by clathrin (clathrin-coated vesicles, CCVs) which are destined for fusion with the early endosome.

Research Area

Signal Transduction

Image Data



Western blot analysis of Phospho-AP2M1 (Thr156) in K562 lysates using Phospho-AP2M1 (Thr156) antibody.

Note

For research use only.