

---

## Summary

|                        |  |
|------------------------|--|
| <b>Production Name</b> | AP2 alpha Rabbit Monoclonal Antibody   |
| <b>Description</b>     | Recombinant Rabbit Monoclonal antibody |
| <b>Host</b>            | Rabbit                                 |
| <b>Application</b>     | WB,IP                                  |
| <b>Reactivity</b>      | Rat                                    |

## Performance

|                     |  |
|---------------------|--|
| <b>Conjugation</b>  | Unconjugated   |
| <b>Modification</b> | Unmodified   |
| <b>Isotype</b>      | IgG  |
| <b>Clonality</b>    | Monoclonal Antibody  |
| <b>Form</b>         | Liquid   |
| <b>Storage</b>      | Store at 4°C short term. Aliquot and store at -20°C long term. Avoid freeze/thaw cycles. |
| <b>Buffer</b>       | 50mM Tris-Glycine(pH 7.4), 0.15M NaCl, 40% Glycerol, 0.01% Sodium azide and 0.05% BSA    |
| <b>Purification</b> | Affinity Purified  |

## Immunogen

|                          |                                     |
|--------------------------|-------------------------------------|
| <b>Gene Name</b>         | TFAP2A                              |
| <b>Alternative Names</b> | AP-2; BOFS; AP2TF; TFAP2; AP-2alpha |
| <b>Gene ID</b>           | 7020                                |
| <b>SwissProt ID</b>      | P05549                              |

## Application

|                         |  |
|-------------------------|--|
| <b>Dilution Ratio</b>   | WB: 1/500-1/1000 IP: 1/20                  |
| <b>Molecular Weight</b> | Calculated MW: 48 kDa; Observed MW: 48 kDa |

## Background

---

**Product Name: AP2 alpha Rabbit Monoclonal Antibody**  
**Catalog #: AMRe01655**

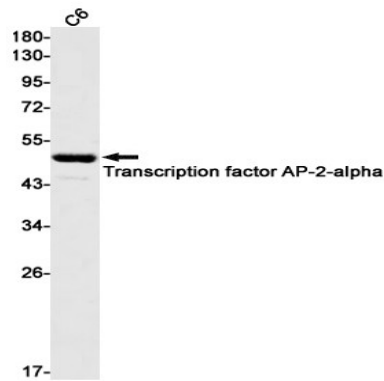


Sequence-specific DNA-binding protein that interacts with inducible viral and cellular enhancer elements to regulate transcription of selected genes. AP-2 factors bind to the consensus sequence 5'-GCCNNNGGC-3' and activate genes involved in a large spectrum of important biological functions including proper eye, face, body wall, limb and neural tube development.

## Research Area

Epigenetics and Nuclear Signaling

## Image Data



Western blot analysis of AP2alpha in C6 lysates using AP2 alpha antibody.

## Note

For research use only.