

**Product Name: Angiopoietin Like 4 Rabbit Monoclonal Antibody**  
**Catalog #: AMRe01646**

---

## Summary

|                        |  |
|------------------------|--|
| <b>Production Name</b> | Angiopoietin Like 4 Rabbit Monoclonal Antibody |
| <b>Description</b>     | Recombinant Rabbit Monoclonal antibody         |
| <b>Host</b>            | Rabbit   |
| <b>Application</b>     | WB   |
| <b>Reactivity</b>      | Human  |

## Performance

|                     |  |
|---------------------|--|
| <b>Conjugation</b>  | Unconjugated   |
| <b>Modification</b> | Unmodified   |
| <b>Isotype</b>      | IgG  |
| <b>Clonality</b>    | Monoclonal Antibody  |
| <b>Form</b>         | Liquid   |
| <b>Storage</b>      | Store at 4°C short term. Aliquot and store at -20°C long term. Avoid freeze/thaw cycles. |
| <b>Buffer</b>       | 50mM Tris-Glycine(pH 7.4), 0.15M NaCl, 40% Glycerol, 0.01% Sodium azide and 0.05% BSA    |
| <b>Purification</b> | Affinity Purified  |

## Immunogen

|                          |   |
|--------------------------|---|
| <b>Gene Name</b>         | ANGPTL4   |
| <b>Alternative Names</b> | NL2; ARP4; FIAF; HARP; PGAR; HFARP; TGQTL; UNQ171; pp1158 |
| <b>Gene ID</b>           | 51129   |
| <b>SwissProt ID</b>      | Q9BY76  |

## Application

|                         |  |
|-------------------------|--|
| <b>Dilution Ratio</b>   | WB: 1/500-1/1000                           |
| <b>Molecular Weight</b> | Calculated MW: 45 kDa; Observed MW: 55 kDa |

**Product Name: Angiopoietin Like 4 Rabbit Monoclonal Antibody**  
**Catalog #: AMRe01646**



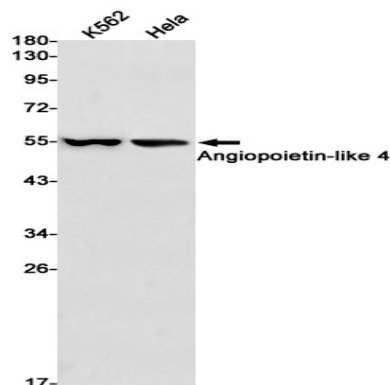
## Background

Protein with hypoxia-induced expression in endothelial cells. May act as a regulator of angiogenesis and modulate tumorigenesis. Inhibits proliferation, migration, and tubule formation of endothelial cells and reduces vascular leakage. May exert a protective function on endothelial cells through an endocrine action. It is directly involved in regulating glucose homeostasis, lipid metabolism, and insulin sensitivity. In response to hypoxia, the unprocessed form of the protein accumulates in the subendothelial extracellular matrix (ECM). The matrix-associated and immobilized unprocessed form limits the formation of actin stress fibers and focal contacts in the adhering endothelial cells and inhibits their adhesion. It also decreases motility of endothelial cells and inhibits the sprouting and tube formation .

## Research Area

Cardiovascular

## Image Data



Western blot analysis of Angiopoietinlike 4 in K562, HeLa lysates using Angiopoietin Like 4 antibody.

## Note

For research use only.