
Summary

Production Name	ALS2CR8 Rabbit Monoclonal Antibody
Description	Recombinant Rabbit Monoclonal antibody
Host	Rabbit
Application	WB
Reactivity	Human

Performance

Conjugation	Unconjugated
Modification	Unmodified
Isotype	IgG
Clonality	Monoclonal Antibody
Form	Liquid
Storage	Store at 4°C short term. Aliquot and store at -20°C long term. Avoid freeze/thaw cycles.
Buffer	50mM Tris-Glycine(pH 7.4), 0.15M NaCl, 40% Glycerol, 0.01% Sodium azide and 0.05% BSA
Purification	Affinity Purified

Immunogen

Gene Name	CARF
Alternative Names	ALS2CR8; NYD-SP24
Gene ID	79800
SwissProt ID	Q8N187

Application

Dilution Ratio	WB: 1/500-1/1000
Molecular Weight	Calculated MW: 81 kDa; Observed MW: 81 kDa

Background

Product Name: ALS2CR8 Rabbit Monoclonal Antibody
Catalog #: AMRe01640

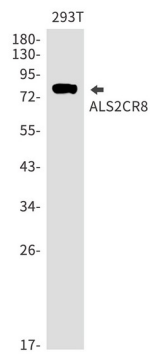


Acts as a transcriptional activator that mediates the calcium- and neuron-selective induction of BDNF exon III transcription.
Binds to the consensus calcium-response element CaRE1 5'-CTATTTCGAG-3' sequence.

Research Area

Cell Biology

Image Data



Western blot analysis of ALS2CR8 in 293T lysates using ALS2CR8 antibody.

Note

For research use only.