

**Product Name: alpha Internexin Rabbit Monoclonal Antibody**  
**Catalog #: AMRe01637**



---

## Summary

|                        |   |
|------------------------|---|
| <b>Production Name</b> | alpha Internexin Rabbit Monoclonal Antibody |
| <b>Description</b>     | Recombinant Rabbit Monoclonal antibody      |
| <b>Host</b>            | Rabbit                                      |
| <b>Application</b>     | WB  |
| <b>Reactivity</b>      | Human,Mouse,Rat                             |

## Performance

|                     |  |
|---------------------|--|
| <b>Conjugation</b>  | Unconjugated   |
| <b>Modification</b> | Unmodified   |
| <b>Isotype</b>      | IgG  |
| <b>Clonality</b>    | Monoclonal Antibody  |
| <b>Form</b>         | Liquid   |
| <b>Storage</b>      | Store at 4°C short term. Aliquot and store at -20°C long term. Avoid freeze/thaw cycles. |
| <b>Buffer</b>       | 50mM Tris-Glycine(pH 7.4), 0.15M NaCl, 40% Glycerol, 0.01% Sodium azide and 0.05% BSA    |
| <b>Purification</b> | Affinity Purified  |

## Immunogen

|                          |  |
|--------------------------|--|
| <b>Gene Name</b>         | INA  |
| <b>Alternative Names</b> | INA; NEF5; Alpha-internexin; Alpha-Inx; 66 kDa neurofilament protein; NF-66; Neurofilament-66; Neurofilament 5 |
| <b>Gene ID</b>           | 9118   |
| <b>SwissProt ID</b>      | Q16352   |

## Application

|                         |  |
|-------------------------|--|
| <b>Dilution Ratio</b>   | WB: 1/500-1/1000                           |
| <b>Molecular Weight</b> | Calculated MW: 55 kDa; Observed MW: 55 kDa |

**Product Name: alpha Internexin Rabbit Monoclonal Antibody**  
**Catalog #: AMRe01637**



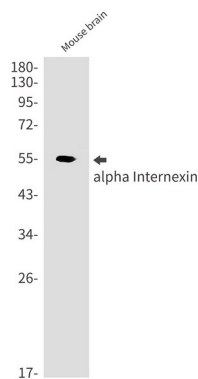
## Background

Class-IV neuronal intermediate filament that is able to self-assemble. It is involved in the morphogenesis of neurons. It may form an independent structural network without the involvement of other neurofilaments or it may cooperate with NF-L to form the filamentous backbone to which NF-M and NF-H attach to form the cross-bridges.

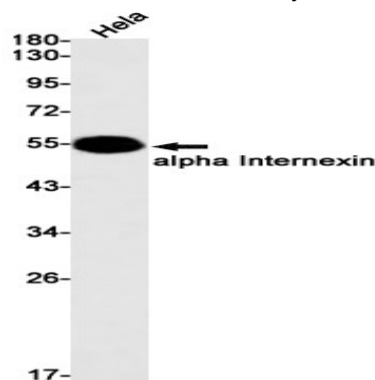
## Research Area

Cell Biology

## Image Data



Western blot analysis of alpha Internexin in mouse brain lysates using alpha Internexin antibody.



Western blot analysis of alpha Internexin in HeLa lysates using alpha Internexin antibody.

## Note

For research use only.