

Product Name: alpha B Crystallin Rabbit Monoclonal Antibody
Catalog #: AMRe01636



Summary

Production Name	alpha B Crystallin Rabbit Monoclonal Antibody
Description	Recombinant Rabbit Monoclonal antibody
Host	Rabbit
Application	WB,ICC/IF,IP
Reactivity	Human,Rat

Performance

Conjugation	Unconjugated
Modification	Unmodified
Isotype	IgG
Clonality	Monoclonal Antibody
Form	Liquid
Storage	Store at 4°C short term. Aliquot and store at -20°C long term. Avoid freeze/thaw cycles.
Buffer	50mM Tris-Glycine(pH 7.4), 0.15M NaCl, 40% Glycerol, 0.01% Sodium azide and 0.05% BSA
Purification	Affinity Purified

Immunogen

Gene Name	CRYAB
Alternative Names	CRYAB; CRYA2; Alpha-crystallin B chain; Alpha(B)-crystallin; Heat shock protein beta-5; HspB5; Renal carcinoma antigen NY-REN-27; Rosenthal fiber component
Gene ID	1410
SwissProt ID	P02511

Application

Dilution Ratio	WB: 1/500-1/1000 IF: 1/50-1/200 IP: 1/20
Molecular Weight	Calculated MW: 20 kDa; Observed MW: 20 kDa

Product Name: alpha B Crystallin Rabbit Monoclonal Antibody
Catalog #: AMRe01636



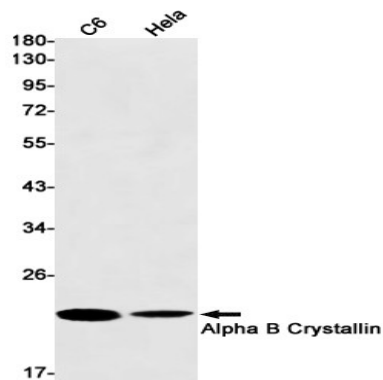
Background

May contribute to the transparency and refractive index of the lens.

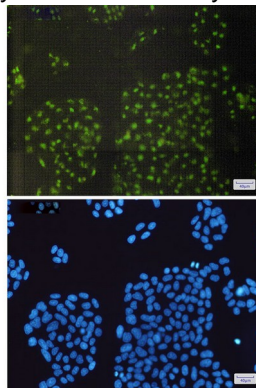
Research Area

Signal Transduction

Image Data



Western blot analysis of Alpha B Crystallin in C6, HeLa lysates using alpha B Crystallin antibody.



Immunocytochemistry analysis of Alpha B Crystallin(green) in HeLa using Alpha B Crystallin antibody,and DAPI(blue)

Note

For research use only.