

Product Name: CTNNA1 Rabbit Monoclonal Antibody
Catalog #: AMRe01633



Summary

Production Name	CTNNA1 Rabbit Monoclonal Antibody
Description	Recombinant Rabbit Monoclonal antibody
Host	Rabbit
Application	WB,IP
Reactivity	Human,Mouse,Rat

Performance

Conjugation	Unconjugated
Modification	Unmodified
Isotype	IgG
Clonality	Monoclonal Antibody
Form	Liquid
Storage	Store at 4°C short term. Aliquot and store at -20°C long term. Avoid freeze/thaw cycles.
Buffer	50mM Tris-Glycine(pH 7.4), 0.15M NaCl, 40% Glycerol, 0.01% Sodium azide and 0.05% BSA
Purification	Affinity Purified

Immunogen

Gene Name	CTNNA1
Alternative Names	Catenin alpha-1; Alpha E-catenin; Cadherin-associated protein; Renal carcinoma antigen NY-REN-13
Gene ID	1495
SwissProt ID	P35221

Application

Dilution Ratio	WB: 1/500-1/1000 IP: 1/20
Molecular Weight	Calculated MW: 100 kDa; Observed MW: 100 kDa

Product Name: CTNNA1 Rabbit Monoclonal Antibody
Catalog #: AMRe01633



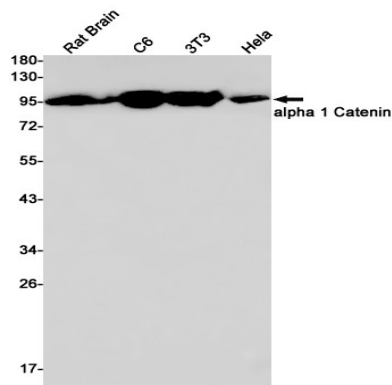
Background

Adherens junctions are dynamic structures that form cell-cell contacts and are important in development, differentiation, tissue integrity, morphology and cell polarity. They are composed of the transmembrane proteins, cadherins, which bind cadherins on adjacent cells in a calcium-dependent manner.

Research Area

Cell Biology

Image Data



Western blot analysis of alpha 1 Catenin in rat Brain, C6, 3T3, HeLa lysates using CTNNA1 antibody.

Note

For research use only.