

---

## Summary

<b>Production Name</b>	ALIX Rabbit Monoclonal Antibody
<b>Description</b>	Recombinant Rabbit Monoclonal antibody
<b>Host</b>	Rabbit
<b>Application</b>	WB
<b>Reactivity</b>	Human

## Performance

<b>Conjugation</b>	Unconjugated
<b>Modification</b>	Unmodified
<b>Isotype</b>	IgG
<b>Clonality</b>	Monoclonal Antibody
<b>Form</b>	Liquid
<b>Storage</b>	Store at 4°C short term. Aliquot and store at -20°C long term. Avoid freeze/thaw cycles.
<b>Buffer</b>	50mM Tris-Glycine(pH 7.4), 0.15M NaCl, 40% Glycerol, 0.01% Sodium azide and 0.05% BSA
<b>Purification</b>	Affinity Purified

## Immunogen

<b>Gene Name</b>	PDCD6IP
<b>Alternative Names</b>	AIP1; ALIX; HP95; DRIP4
<b>Gene ID</b>	10015
<b>SwissProt ID</b>	Q8WUM4

## Application

<b>Dilution Ratio</b>	WB: 1/500-1/1000
<b>Molecular Weight</b>	Calculated MW: 96 kDa; Observed MW: 96 kDa

## Background

---

**Product Name: ALIX Rabbit Monoclonal Antibody**  
**Catalog #: AMRe01627**

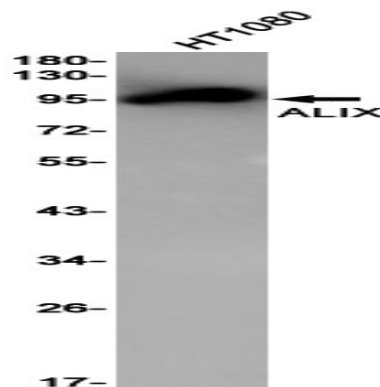


Class E VPS protein involved in concentration and sorting of cargo proteins of the multivesicular body (MVB) for incorporation into intraluminal vesicles (ILVs) that are generated by invagination and scission from the limiting membrane of the endosome.

## Research Area

Cell Biology

## Image Data



Western blot analysis of ALIX in HT-1080 lysates using ALIX antibody.

## Note

For research use only.