

**Product Name: Neurofilament light polypeptide Rabbit
Monoclonal Antibody
Catalog #: AMRe01596**

Summary

Production Name	Neurofilament light polypeptide Rabbit Monoclonal Antibody
Description	Recombinant Rabbit Monoclonal antibody
Host	Rabbit
Application	WB,IHC-P,IP
Reactivity	Mouse

Performance

Conjugation	Unconjugated
Modification	Unmodified
Isotype	IgG
Clonality	Monoclonal Antibody
Form	Liquid
Storage	Store at 4°C short term. Aliquot and store at -20°C long term. Avoid freeze/thaw cycles.
Buffer	50mM Tris-Glycine(pH 7.4), 0.15M NaCl, 40% Glycerol, 0.01% Sodium azide and 0.05% BSA
Purification	Affinity Purified

Immunogen

Gene Name	Nefl
Alternative Names	NFL; NF-L; NF68; CMT1F; CMT2E; CMTDIG; PPP1R110
Gene ID	18039
SwissProt ID	P08551

Application

Dilution Ratio	WB: 1/500-1/1000 IHC: 1/50-1/100 IP: 1/20
Molecular Weight	Calculated MW: 62 kDa; Observed MW: 68 kDa

**Product Name: Neurofilament light polypeptide Rabbit
Monoclonal Antibody
Catalog #: AMRe01596**



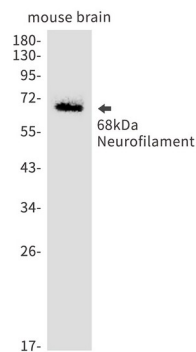
Background

Neurofilaments usually contain three intermediate filament proteins: L, M, and H which are involved in the maintenance of neuronal caliber. Miscellaneous NF-L is the most abundant of the three neurofilament proteins and, like the other nonepithelial intermediate filament proteins, it can form homopolymeric 10-nm filaments.

Research Area

Neuroscience

Image Data



Western blot analysis of 68kDa Neurofilament in mouse brain lysates using Neurofilament light polypeptide antibody.

Note

For research use only.