
Summary

Production Name	14-3-3 Rabbit Monoclonal Antibody
Description	Recombinant Rabbit Monoclonal antibody
Host	Rabbit
Application	WB
Reactivity	Human,Mouse,Rat

Performance

Conjugation	Unconjugated
Modification	Unmodified
Isotype	IgG
Clonality	Monoclonal Antibody
Form	Liquid
Storage	Store at 4°C short term. Aliquot and store at -20°C long term. Avoid freeze/thaw cycles.
Buffer	50mM Tris-Glycine(pH 7.4), 0.15M NaCl, 40% Glycerol, 0.01% Sodium azide and 0.05% BSA
Purification	Affinity Purified

Immunogen

Gene Name	YWHAB
Alternative Names	YWHAB; 14-3-3 protein beta/alpha; Protein 1054; Protein kinase C inhibitor protein 1; KCIP-1
Gene ID	7529
SwissProt ID	P31946

Application

Dilution Ratio	WB: 1/500-1/1000
Molecular Weight	Calculated MW: 28 kDa; Observed MW: 28 kDa

Product Name: 14-3-3 Rabbit Monoclonal Antibody
Catalog #: AMRe01592



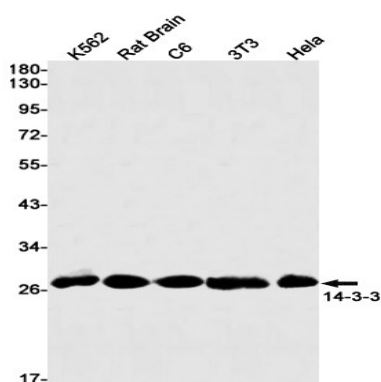
Background

Adapter protein implicated in the regulation of a large spectrum of both general and specialized signaling pathways. Binds to a large number of partners, usually by recognition of a phosphoserine or phosphothreonine motif. Binding generally results in the modulation of the activity of the binding partner. Negative regulator of osteogenesis.

Research Area

Neuroscience

Image Data



Western blot analysis of 41701 in K562, rat Brain, C6, 3T3, Hela lysates using 14-3-3 antibody.

Note

For research use only.