

**Product Name: Phospho-Tau (Ser202/Thr205) Rabbit
Monoclonal Antibody
Catalog #: AMRe01572**



Summary

Production Name	Phospho-Tau (Ser202/Thr205) Rabbit Monoclonal Antibody
Description	Recombinant Rabbit Monoclonal antibody
Host	Rabbit
Application	WB,IP
Reactivity	Human

Performance

Conjugation	Unconjugated
Modification	Phosphorylated
Isotype	IgG
Clonality	Monoclonal Antibody
Form	Liquid
Storage	Store at 4°C short term. Aliquot and store at -20°C long term. Avoid freeze/thaw cycles.
Buffer	50mM Tris-Glycine(pH 7.4), 0.15M NaCl, 40% Glycerol, 0.01% Sodium azide and 0.05% BSA
Purification	Affinity Purified

Immunogen

Gene Name	MAPT
Alternative Names	MAPT; MAPTL; MTBT1; TAU; Microtubule-associated protein tau; Neurofibrillary tangle protein; Paired helical filament-tau; PHF-tau
Gene ID	4137
SwissProt ID	P10636

Application

Dilution Ratio	WB: 1/500-1/1000 IP: 1/20
Molecular Weight	Calculated MW: 79 kDa; Observed MW: 50-80 kDa

**Product Name: Phospho-Tau (Ser202/Thr205) Rabbit
Monoclonal Antibody**
Catalog #: AMRe01572



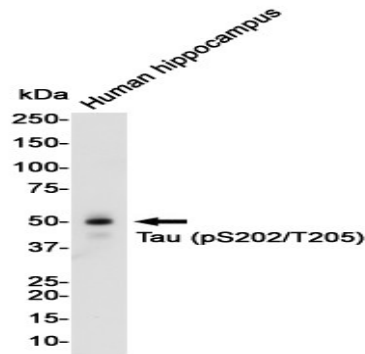
Background

This gene encodes the microtubule-associated protein tau (MAPT) whose transcript undergoes complex, regulated alternative splicing, giving rise to several mRNA species. MAPT transcripts are differentially expressed in the nervous system, depending on stage of neuronal maturation and neuron type.

Research Area

Neuroscience

Image Data



Western blot analysis of Tau (Phospho-Ser202/Thr205) in Human Fetal brain lysates using Phospho-Tau (Ser202/Thr205) antibody.

Note

For research use only.