

**Product Name: CD8 alpha Rabbit Monoclonal Antibody**  
**Catalog #: AMRe01560**



---

## Summary

<b>Production Name</b>	CD8 alpha Rabbit Monoclonal Antibody
<b>Description</b>	Recombinant Rabbit Monoclonal antibody
<b>Host</b>	Rabbit
<b>Application</b>	WB,IHC-P
<b>Reactivity</b>	Human,Hamster

## Performance

<b>Conjugation</b>	Unconjugated
<b>Modification</b>	Unmodified
<b>Isotype</b>	IgG
<b>Clonality</b>	Monoclonal Antibody
<b>Form</b>	Liquid
<b>Storage</b>	Store at 4°C short term. Aliquot and store at -20°C long term. Avoid freeze/thaw cycles.
<b>Buffer</b>	50mM Tris-Glycine(pH 7.4), 0.15M NaCl, 40% Glycerol, 0.01% Sodium azide and 0.05% BSA
<b>Purification</b>	Affinity Purified

## Immunogen

<b>Gene Name</b>	CD8A
<b>Alternative Names</b>	CD8A; MAL; T-cell surface glycoprotein CD8 alpha chain; T-lymphocyte differentiation antigen T8/Leu-2; CD antigen CD8a
<b>Gene ID</b>	925
<b>SwissProt ID</b>	P01732

## Application

<b>Dilution Ratio</b>	WB: 1/500-1/1000 IHC: 1/50-1/100
<b>Molecular Weight</b>	Calculated MW: 26 kDa; Observed MW: 29 kDa

**Product Name: CD8 alpha Rabbit Monoclonal Antibody**  
**Catalog #: AMRe01560**



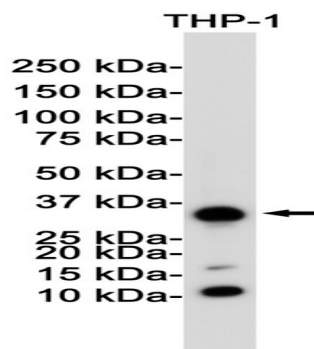
## Background

Identifies cytotoxic/suppressor T-cells that interact with MHC class I bearing targets. CD8 is thought to play a role in the process of T-cell mediated killing. CD8 alpha chains binds to class I MHC molecules alpha-3 domains.

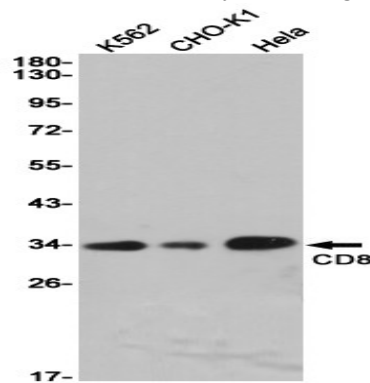
## Research Area

Immunology

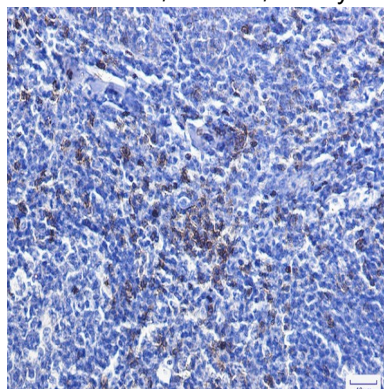
## Image Data



Western blot analysis of CD8 in THP-1 lysates using CD8 alpha antibody.



Western blot analysis of CD8 in K562, CHO-K1, HeLa lysates using CD8 antibody.



Immunohistochemistry analysis of paraffin-embedded Human tonsil using CD8 antibody. High-pressure and temperature

**Product Name: CD8 alpha Rabbit Monoclonal Antibody**  
**Catalog #: AMRe01560**



---

Sodium Citrate pH 6.0 was used for antigen retrieval.

**Note**

For research use only.