

**Product Name: Phospho-S6K2 (Ser371) Rabbit  
Monoclonal Antibody  
Catalog #: AMRe01555**

---

## Summary

<b>Production Name</b>	Phospho-S6K2 (Ser371) Rabbit Monoclonal Antibody
<b>Description</b>	Recombinant Rabbit Monoclonal antibody
<b>Host</b>	Rabbit
<b>Application</b>	WB
<b>Reactivity</b>	Human,Mouse,Rat

## Performance

<b>Conjugation</b>	Unconjugated
<b>Modification</b>	Phosphorylated
<b>Isotype</b>	IgG
<b>Clonality</b>	Monoclonal Antibody
<b>Form</b>	Liquid
<b>Storage</b>	Store at 4°C short term. Aliquot and store at -20°C long term. Avoid freeze/thaw cycles.
<b>Buffer</b>	50mM Tris-Glycine(pH 7.4), 0.15M NaCl, 40% Glycerol, 0.01% Sodium azide and 0.05% BSA
<b>Purification</b>	Affinity Purified

## Immunogen

<b>Gene Name</b>	RPS6KB2
<b>Alternative Names</b>	RPS6KB2; STK14B; Ribosomal protein S6 kinase beta-2; S6K-beta-2; S6K2; 70 kDa ribosomal protein S6 kinase 2; P70S6K2; p70-S6K 2; S6 kinase-related kinase; SRK; Serine/threonine-protein kinase 14B; p70 ribosomal S6 kinase beta; S6K-beta; p70
<b>Gene ID</b>	6199
<b>SwissProt ID</b>	Q9UBS0

## Application

<b>Dilution Ratio</b>	WB: 1/500-1/1000
<b>Molecular Weight</b>	Calculated MW: 53 kDa; Observed MW: 60 kDa

---

**Product Name: Phospho-S6K2 (Ser371) Rabbit  
Monoclonal Antibody  
Catalog #: AMRe01555**

---

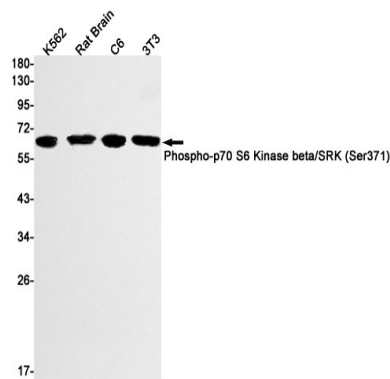
## Background

Phosphorylates specifically ribosomal protein S6.

## Research Area

Signal Transduction

## Image Data



Western blot analysis of Phospho-p70 S6 Kinase beta/SRK (Ser371) in K562, rat Brain, C6, 3T3 lysates using Phospho-S6K2 (Ser371) antibody.

## Note

For research use only.