

**Product Name: Phospho-MDM2 (Ser166) Rabbit
Monoclonal Antibody
Catalog #: AMRe01553**

Summary

Production Name	Phospho-MDM2 (Ser166) Rabbit Monoclonal Antibody
Description	Recombinant Rabbit Monoclonal antibody
Host	Rabbit
Application	WB,IHC-P
Reactivity	Human,Rat

Performance

Conjugation	Unconjugated
Modification	Phosphorylated
Isotype	IgG
Clonality	Monoclonal Antibody
Form	Liquid
Storage	Store at 4°C short term. Aliquot and store at -20°C long term. Avoid freeze/thaw cycles.
Buffer	50mM Tris-Glycine(pH 7.4), 0.15M NaCl, 40% Glycerol, 0.01% Sodium azide and 0.05% BSA
Purification	Affinity Purified

Immunogen

Gene Name	MDM2
Alternative Names	Double minute 2 protein; Hdm2; Oncoprotein Mdm2
Gene ID	4193
SwissProt ID	Q00987

Application

Dilution Ratio	WB: 1/500-1/1000 IHC: 1/50-1/100
Molecular Weight	Calculated MW: 55 kDa; Observed MW: 90 kDa

Product Name: Phospho-MDM2 (Ser166) Rabbit Monoclonal Antibody
Catalog #: AMRe01553

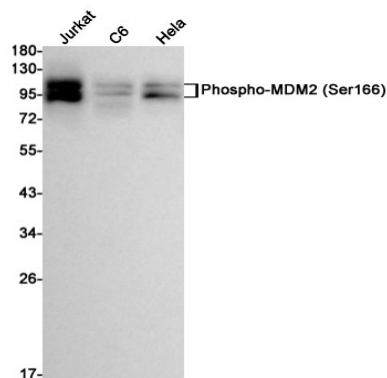
Background

E3 ubiquitin-protein ligase that mediates ubiquitination of p53/TP53, leading to its degradation by the proteasome.

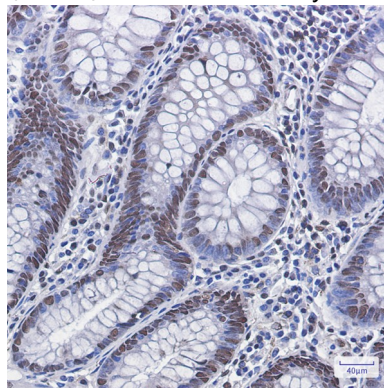
Research Area

Neuroscience

Image Data



Western blot analysis of Phospho-MDM2 (Ser166) in Jurkat, C6, HeLa lysates using Phospho-MDM2 (Ser166) antibody.



Immunohistochemistry analysis of paraffin-embedded Human colon cancer using Phospho-MDM2 (Ser166) antibody. High-pressure and temperature Sodium Citrate pH 6.0 was used for antigen retrieval.

Note

For research use only.