

**Product Name: Phospho-eIF2A (Ser51) Rabbit
Monoclonal Antibody
Catalog #: AMRe01552**

Summary

Production Name	Phospho-eIF2A (Ser51) Rabbit Monoclonal Antibody
Description	Recombinant Rabbit Monoclonal antibody
Host	Rabbit
Application	WB
Reactivity	Human,Mouse,Rat

Performance

Conjugation	Unconjugated
Modification	Phosphorylated
Isotype	IgG
Clonality	Monoclonal Antibody
Form	Liquid
Storage	Store at 4°C short term. Aliquot and store at -20°C long term. Avoid freeze/thaw cycles.
Buffer	50mM Tris-Glycine(pH 7.4), 0.15M NaCl, 40% Glycerol, 0.01% Sodium azide and 0.05% BSA
Purification	Affinity Purified

Immunogen

Gene Name	EIF2S1
Alternative Names	EIF2S1; EIF2A; Eukaryotic translation initiation factor 2 subunit 1; Eukaryotic translation initiation factor 2 subunit alpha; eIF-2-alpha; eIF-2A; eIF-2alpha
Gene ID	1965
SwissProt ID	P05198

Application

Dilution Ratio	WB: 1/500-1/1000
Molecular Weight	Calculated MW: 36 kDa; Observed MW: 36 kDa

**Product Name: Phospho-eIF2A (Ser51) Rabbit
Monoclonal Antibody
Catalog #: AMRe01552**

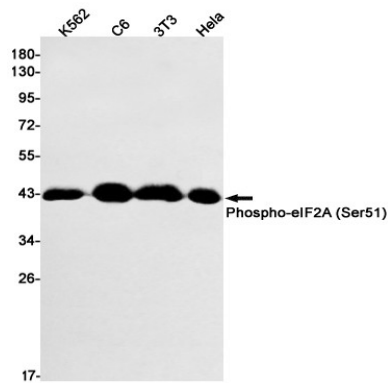
Background

eIF2A a translation initiation factor that functions in the early steps of protein synthesis by forming a ternary complex with GTP and initiator tRNA. This complex binds to a 40s ribosomal subunit, followed by mRNA binding to form a 43S preinitiation complex.

Research Area

Epigenetics and Nuclear Signaling

Image Data



Western blot analysis of Phospho-eIF2A (Ser51) in K562, C6, 3T3, HeLa lysates using Phospho-eIF2A (Ser51) antibody.

Note

For research use only.