

**Product Name: Phosoho-ErbB 2/EGFR
(Tyr1248/Tyr1173) Rabbit Monoclonal Antibody
Catalog #: AMRe01542**

Summary

Production Name	Phosoho-ErbB 2/EGFR (Tyr1248/Tyr1173) Rabbit Monoclonal Antibody
Description	Recombinant Rabbit Monoclonal antibody
Host	Rabbit
Application	WB,IP
Reactivity	Human

Performance

Conjugation	Unconjugated
Modification	Phosphorylated
Isotype	IgG
Clonality	Monoclonal Antibody
Form	Liquid
Storage	Store at 4°C short term. Aliquot and store at -20°C long term. Avoid freeze/thaw cycles.
Buffer	50mM Tris-Glycine(pH 7.4), 0.15M NaCl, 40% Glycerol, 0.01% Sodium azide and 0.05% BSA
Purification	Affinity Purified

Immunogen

Gene Name	ERBB2
Alternative Names	ERBB2; HER2; MLN19; NEU; NGL; Receptor tyrosine-protein kinase erbB-2; Metastatic lymph node gene 19 protein; MLN 19; Proto-oncogene Neu; Proto-oncogene c-ErbB-2; Tyrosine kinase-type cell surface receptor HER2; p185erbB2; CD antigen CD340
Gene ID	2064
SwissProt ID	P04626

Application

Dilution Ratio	WB: 1/500-1/1000 IP: 1/20
Molecular Weight	Calculated MW: 138 kDa; Observed MW: 180 kDa

**Product Name: Phosoho-ErbB 2/EGFR
(Tyr1248/Tyr1173) Rabbit Monoclonal Antibody
Catalog #: AMRe01542**

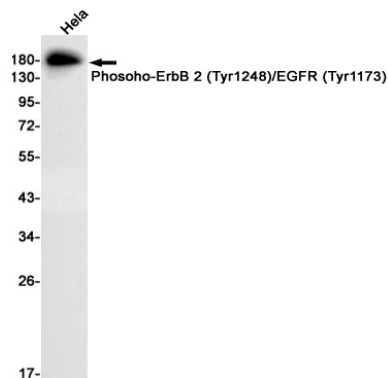
Background

This gene encodes a member of the epidermal growth factor (EGF) receptor family of receptor tyrosine kinases. This protein has no ligand binding domain of its own and therefore cannot bind growth factors. However, it does bind tightly to other ligand-bound EGF receptor family members to form a heterodimer, stabilizing ligand binding and enhancing kinase-mediated activation of downstream signalling pathways, such as those involving mitogen-activated protein kinase and phosphatidylinositol-3 kinase.

Research Area

Cancer

Image Data



Western blot analysis of PhosohoErbB 2 (Tyr1248)/EGFR (Tyr1173) in HeLa lysates using PhosohoErbB 2/EGFR (Tyr1248/Tyr1173) antibody.

Note

For research use only.