
Summary

Production Name	CD146 Rabbit Monoclonal Antibody
Description	Recombinant Rabbit Monoclonal antibody
Host	Rabbit
Application	WB,IHC-F,IHC-P,ICC/IF
Reactivity	Human,Rat

Performance

Conjugation	Unconjugated
Modification	Unmodified
Isotype	IgG
Clonality	Monoclonal Antibody
Form	Liquid
Storage	Store at 4°C short term. Aliquot and store at -20°C long term. Avoid freeze/thaw cycles.
Buffer	50mM Tris-Glycine(pH 7.4), 0.15M NaCl, 40% Glycerol, 0.01% Sodium azide and 0.05% BSA
Purification	Affinity Purified

Immunogen

Gene Name	MCAM
Alternative Names	CD146; MUC18
Gene ID	4162
SwissProt ID	P43121

Application

Dilution Ratio	WB: 1/500-1/1000 IHC: 1/50-1/100 IF: 1/50-1/200
Molecular Weight	Calculated MW: 72 kDa; Observed MW: 120 kDa

Background

Product Name: CD146 Rabbit Monoclonal Antibody
Catalog #: AMRe01520

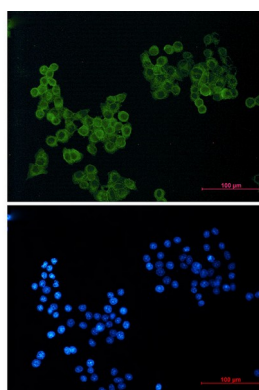


CD146 plays a role in cell adhesion, and in cohesion of the endothelial monolayer at intercellular junctions in vascular tissue. Its expression may allow melanoma cells to interact with cellular elements of the vascular system, thereby enhancing hematogeneous tumor spread. Could be an adhesion molecule active in neural crest cells during embryonic development.

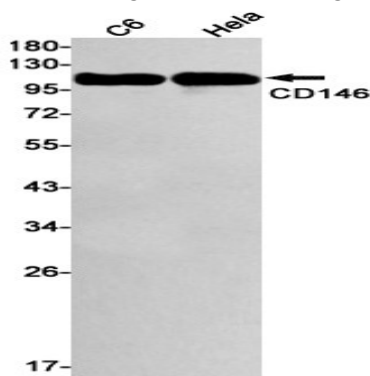
Research Area

Immunology

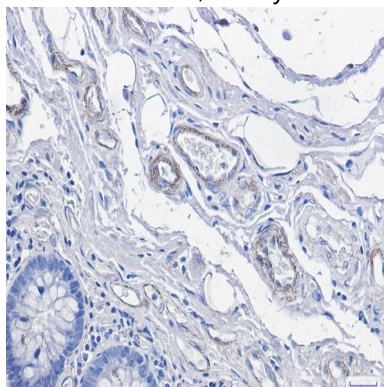
Image Data



Immunocytochemistry analysis of CD146 (green) in HeLa using CD146 antibody, and DAPI (blue).



Western blot analysis of CD146 in C6, HeLa lysates using CD146 antibody.



Immunohistochemistry analysis of paraffin-embedded Human colon cancer tissue using CD146 antibody. High-pressure and

Product Name: CD146 Rabbit Monoclonal Antibody
Catalog #: AMRe01520



temperature Sodium Citrate pH 6.0 was used for antigen retrieval.

Note

For research use only.