

Summary

Production Name	PLGF Rabbit Monoclonal Antibody
Description	Recombinant Rabbit Monoclonal antibody
Host	Rabbit
Application	WB
Reactivity	Human,Mouse,Rat

Performance

Conjugation	Unconjugated
Modification	Unmodified
Isotype	IgG
Clonality	Monoclonal Antibody
Form	Liquid
Storage	Store at 4°C short term. Aliquot and store at -20°C long term. Avoid freeze/thaw cycles.
Buffer	50mM Tris-Glycine(pH 7.4), 0.15M NaCl, 40% Glycerol, 0.01% Sodium azide and 0.05% BSA
Purification	Affinity Purified

Immunogen

Gene Name	PGF
Alternative Names	Pgf; PGFL; PIGF; Placenta growth factor; Placental growth factor; vascular endothelial growth factor related protein; PIGF; PIGF2; SHGC 10760
Gene ID	5228
SwissProt ID	P49763

Application

Dilution Ratio	WB: 1/500-1/1000
Molecular Weight	Calculated MW: 25 kDa; Observed MW: 25 kDa

Product Name: PLGF Rabbit Monoclonal Antibody
Catalog #: AMRe01514



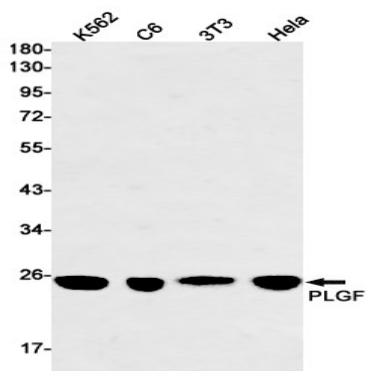
Background

Growth factor active in angiogenesis and endothelial cell growth, stimulating their proliferation and migration. It binds to the receptor FLT1/VEGFR-1. Isoform PIGF-2 binds NRP1/neuropilin-1 and NRP2/neuropilin-2 in a heparin-dependent manner.

Research Area

Cardiovascular

Image Data



Western blot analysis of PLGF in K562, C6, 3T3, HeLa lysates using PLGF antibody.

Note

For research use only.