

---

## Summary

<b>Production Name</b>	Glypican 1 Rabbit Monoclonal Antibody
<b>Description</b>	Recombinant Rabbit Monoclonal antibody
<b>Host</b>	Rabbit
<b>Application</b>	WB,ICC/IF
<b>Reactivity</b>	Human

## Performance

<b>Conjugation</b>	Unconjugated
<b>Modification</b>	Unmodified
<b>Isotype</b>	IgG
<b>Clonality</b>	Monoclonal Antibody
<b>Form</b>	Liquid
<b>Storage</b>	Store at 4°C short term. Aliquot and store at -20°C long term. Avoid freeze/thaw cycles.
<b>Buffer</b>	50mM Tris-Glycine(pH 7.4), 0.15M NaCl, 40% Glycerol, 0.01% Sodium azide and 0.05% BSA
<b>Purification</b>	Affinity Purified

## Immunogen

<b>Gene Name</b>	GPC1
<b>Alternative Names</b>	glypican
<b>Gene ID</b>	2817
<b>SwissProt ID</b>	P35052

## Application

<b>Dilution Ratio</b>	WB: 1/500-1/1000 IF: 1/50-1/200
<b>Molecular Weight</b>	Calculated MW: 62 kDa; Observed MW: 55 kDa

## Background

---

**Product Name: Glypican 1 Rabbit Monoclonal Antibody**  
**Catalog #: AMRe01512**

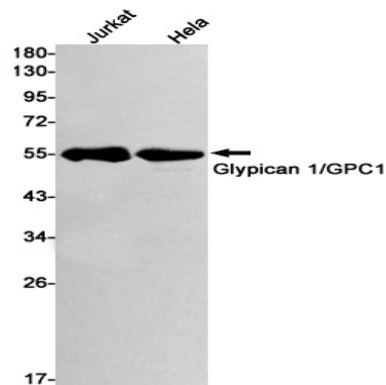


Cell surface proteoglycan that bears heparan sulfate.

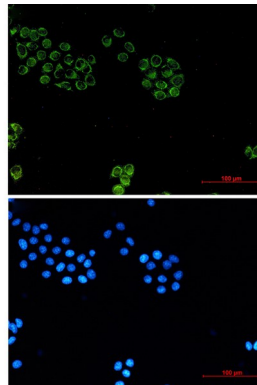
## Research Area

Neuroscience

## Image Data



Western blot analysis of Glypican 1/GPC1 in Jurkat, HeLa lysates using Glypican 1 antibody.



Immunocytochemistry analysis of Glypican 1/GPC1 (green) in HeLa using Glypican 1/GPC1 antibody, and DAPI (blue)

## Note

For research use only.