

Product Name: Profilin 1 Rabbit Monoclonal Antibody
Catalog #: AMRe01506



Summary

Production Name	Profilin 1 Rabbit Monoclonal Antibody
Description	Recombinant Rabbit Monoclonal antibody
Host	Rabbit
Application	WB,IHC-F,IHC-P,ICC/IF,IP
Reactivity	Human,Mouse,Rat

Performance

Conjugation	Unconjugated
Modification	Unmodified
Isotype	IgG
Clonality	Monoclonal Antibody
Form	Liquid
Storage	Store at 4°C short term. Aliquot and store at -20°C long term. Avoid freeze/thaw cycles.
Buffer	50mM Tris-Glycine(pH 7.4), 0.15M NaCl, 40% Glycerol, 0.01% Sodium azide and 0.05% BSA
Purification	Affinity Purified

Immunogen

Gene Name	PFN1
Alternative Names	Epididymis tissue protein Li 184a; Profilin I
Gene ID	5216
SwissProt ID	P07737

Application

Dilution Ratio	WB: 1/500-1/1000 IHC: 1/50-1/100 IF: 1/50-1/200 IP: 1/20
Molecular Weight	Calculated MW: 15 kDa; Observed MW: 15 kDa

Background

Product Name: Profilin 1 Rabbit Monoclonal Antibody
Catalog #: AMRe01506

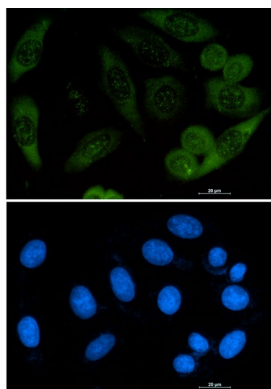


Binds to actin and affects the structure of the cytoskeleton. At high concentrations, profilin prevents the polymerization of actin, whereas it enhances it at low concentrations. By binding to PIP2, it inhibits the formation of IP3 and DG.

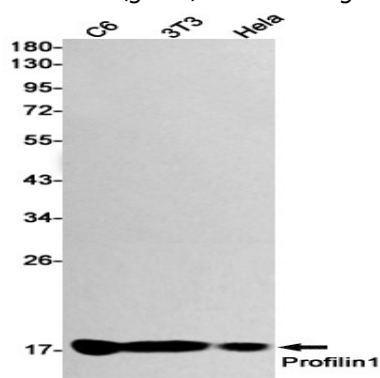
Research Area

Tags & Cell Markers

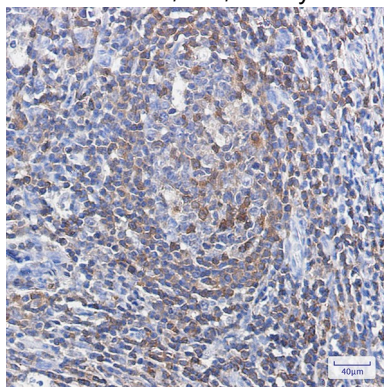
Image Data



Immunocytochemistry analysis of Profilin 1 (green) in A549 using Profilin 1 antibody, and DAPI (blue).



Western blot analysis of Profilin 1 in C6, 3T3, HeLa lysates using Profilin 1 antibody.



Immunohistochemistry analysis of paraffin-embedded Human tonsil using Profilin 1 antibody. High-pressure and temperature Sodium Citrate pH 6.0 was used for antigen retrieval.

Product Name: Profilin 1 Rabbit Monoclonal Antibody
Catalog #: AMRe01506



Note

For research use only.