

Product Name: Cytokeratin 16 Rabbit Monoclonal Antibody
Catalog #: AMRe01491

Summary

Production Name	Cytokeratin 16 Rabbit Monoclonal Antibody
Description	Recombinant Rabbit Monoclonal antibody
Host	Rabbit
Application	WB,IHC-P
Reactivity	Human

Performance

Conjugation	Unconjugated
Modification	Unmodified
Isotype	IgG
Clonality	Monoclonal Antibody
Form	Liquid
Storage	Store at 4°C short term. Aliquot and store at -20°C long term. Avoid freeze/thaw cycles.
Buffer	50mM Tris-Glycine(pH 7.4), 0.15M NaCl, 40% Glycerol, 0.01% Sodium azide and 0.05% BSA
Purification	Affinity Purified

Immunogen

Gene Name	KRT16
Alternative Names	KRT16; KRT16A; Keratin; type I cytoskeletal 16; Cytokeratin-16; CK-16; Keratin-16; K16
Gene ID	3868
SwissProt ID	P08779

Application

Dilution Ratio	WB: 1/500-1/1000 IHC: 1/50-1/100
Molecular Weight	Calculated MW: 51 kDa; Observed MW: 51 kDa

Product Name: Cytokeratin 16 Rabbit Monoclonal Antibody
Catalog #: AMRe01491

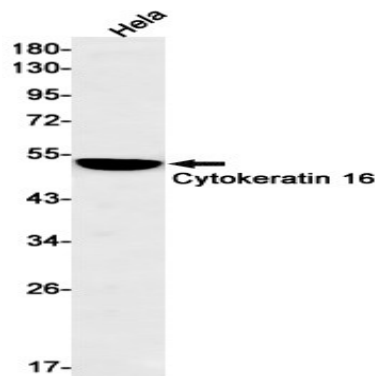
Background

K16 a type I cytoskeletal keratin. The keratins are intermediate filament proteins responsible for the structural integrity of epithelial cells and are subdivided into cytokeratins and hair keratins. There are two types of cytoskeletal and microfibrillar keratin: type I (acidic; 40-55 kDa) [K9 to K20] and type II (neutral to basic; 56-70 kDa) [K1 to K8].

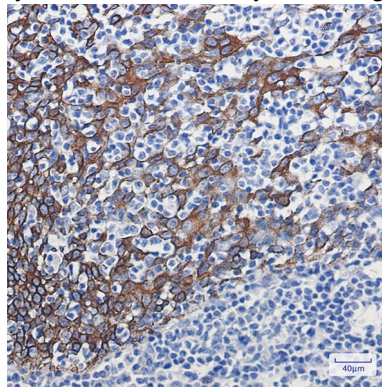
Research Area

Signal Transduction

Image Data



Western blot analysis of Cytokeratin 16 in HeLa lysates using Cytokeratin 16 antibody.



Immunohistochemistry analysis of paraffin-embedded Human tonsil using Cytokeratin 16 antibody. High-pressure and temperature Sodium Citrate pH 6.0 was used for antigen retrieval.

Note

For research use only.