

## Summary

<b>Production Name</b>	MAGEC2 Rabbit Monoclonal Antibody
<b>Description</b>	Recombinant Rabbit Monoclonal antibody
<b>Host</b>	Rabbit
<b>Application</b>	WB,IHC-P,IP
<b>Reactivity</b>	Human,Mouse

## Performance

<b>Conjugation</b>	Unconjugated
<b>Modification</b>	Unmodified
<b>Isotype</b>	IgG
<b>Clonality</b>	Monoclonal Antibody
<b>Form</b>	Liquid
<b>Storage</b>	Store at 4°C short term. Aliquot and store at -20°C long term. Avoid freeze/thaw cycles.
<b>Buffer</b>	50mM Tris-Glycine(pH 7.4), 0.15M NaCl, 40% Glycerol, 0.01% Sodium azide and 0.05% BSA
<b>Purification</b>	Affinity Purified

## Immunogen

<b>Gene Name</b>	MAGEC2
<b>Alternative Names</b>	CT10,MAGE-C2 antigen,MAGE-E1 antigen,MAGEC2,HCA587, MAGEE1
<b>Gene ID</b>	51438
<b>SwissProt ID</b>	Q9UBF1

## Application

<b>Dilution Ratio</b>	WB: 1/500-1/1000 IHC: 1/50-1/100 IP: 1/20
<b>Molecular Weight</b>	Calculated MW: 41 kDa; Observed MW: 55 kDa

## Background

**Product Name: MAGEC2 Rabbit Monoclonal Antibody**  
**Catalog #: AMRe01490**

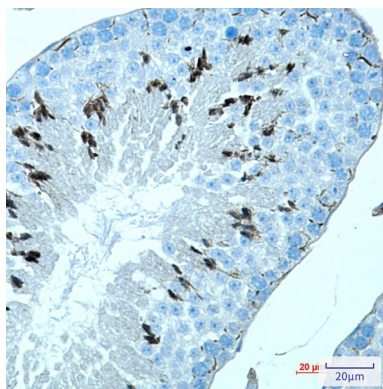


Proposed to enhance ubiquitin ligase activity of RING-type zinc finger-containing E3 ubiquitin-protein ligases.

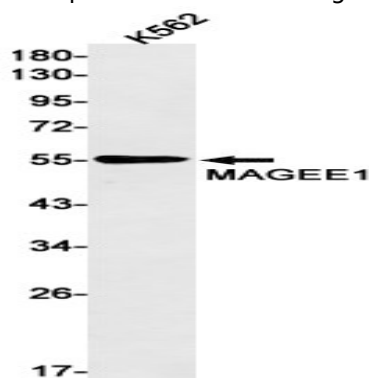
## Research Area

-

## Image Data



Immunohistochemistry analysis of paraffin-embedded mouse testis using MAGEC2 antibody. High-pressure and temperature Sodium Citrate pH 6.0 was used for antigen retrieval.



Western blot analysis of MAGEE1 in K562 lysates using MAGEE1 antibody.

## Note

For research use only.