

Summary

Production Name	PAX6 Rabbit Monoclonal Antibody
Description	Recombinant Rabbit Monoclonal antibody
Host	Rabbit
Application	WB
Reactivity	Human

Performance

Conjugation	Unconjugated
Modification	Unmodified
Isotype	IgG
Clonality	Monoclonal Antibody
Form	Liquid
Storage	Store at 4°C short term. Aliquot and store at -20°C long term. Avoid freeze/thaw cycles.
Buffer	50mM Tris-Glycine(pH 7.4), 0.15M NaCl, 40% Glycerol, 0.01% Sodium azide and 0.05% BSA
Purification	Affinity Purified

Immunogen

Gene Name	PAX6
Alternative Names	PAX6; AN2; Paired box protein Pax-6; Aniridia type II protein; Oculorhombin
Gene ID	5080
SwissProt ID	P26367

Application

Dilution Ratio	WB: 1/500-1/1000
Molecular Weight	Calculated MW: 47 kDa; Observed MW: 47 kDa

Background

Product Name: PAX6 Rabbit Monoclonal Antibody
Catalog #: AMRe01489

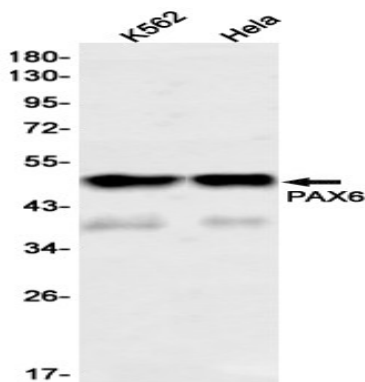


Transcription factor with important functions in the development of the eye, nose, central nervous system and pancreas. Required for the differentiation of pancreatic islet alpha cells (By similarity). Competes with PAX4 in binding to a common element in the glucagon, insulin and somatostatin promoters. Regulates specification of the ventral neuron subtypes by establishing the correct progenitor domains (By similarity).

Research Area

Neuroscience

Image Data



Western blot analysis of PAX6 in K562, HeLa lysates using PAX6 antibody.

Note

For research use only.