

---

## Summary

<b>Production Name</b>	SATB2 Rabbit Monoclonal Antibody
<b>Description</b>	Recombinant Rabbit Monoclonal antibody
<b>Host</b>	Rabbit
<b>Application</b>	WB
<b>Reactivity</b>	Rat

## Performance

<b>Conjugation</b>	Unconjugated
<b>Modification</b>	Unmodified
<b>Isotype</b>	IgG
<b>Clonality</b>	Monoclonal Antibody
<b>Form</b>	Liquid
<b>Storage</b>	Store at 4°C short term. Aliquot and store at -20°C long term. Avoid freeze/thaw cycles.
<b>Buffer</b>	50mM Tris-Glycine(pH 7.4), 0.15M NaCl, 40% Glycerol, 0.01% Sodium azide and 0.05% BSA
<b>Purification</b>	Affinity Purified

## Immunogen

<b>Gene Name</b>	SATB2
<b>Alternative Names</b>	GLSS; SATB family member 2; SATB homeobox 2; SATB2; Special AT rich sequence binding protein 2
<b>Gene ID</b>	23314
<b>SwissProt ID</b>	Q9UPW6

## Application

<b>Dilution Ratio</b>	WB: 1/500-1/1000
<b>Molecular Weight</b>	Calculated MW: 83 kDa; Observed MW: 83 kDa

**Product Name: SATB2 Rabbit Monoclonal Antibody**  
**Catalog #: AMRe01482**



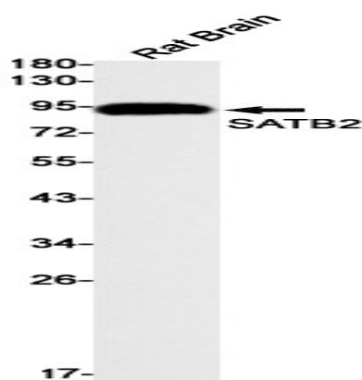
## Background

Binds to DNA, at nuclear matrix- or scaffold-associated regions. Thought to recognize the sugar-phosphate structure of double-stranded DNA. Transcription factor controlling nuclear gene expression, by binding to matrix attachment regions (MARs) of DNA and inducing a local chromatin-loop remodeling. Acts as a docking site for several chromatin remodeling enzymes and also by recruiting corepressors (HDACs) or coactivators (HATs) directly to promoters and enhancers.

## Research Area

Neuroscience

## Image Data



Western blot analysis of SATB2 in rat Brain lysates using SATB2 antibody.

## Note

For research use only.