

Summary

Production Name	ASH2L Rabbit Monoclonal Antibody
Description	Recombinant Rabbit Monoclonal antibody
Host	Rabbit
Application	WB,ICC/IF,IP
Reactivity	Human,Rat

Performance

Conjugation	Unconjugated
Modification	Unmodified
Isotype	IgG
Clonality	Monoclonal Antibody
Form	Liquid
Storage	Store at 4°C short term. Aliquot and store at -20°C long term. Avoid freeze/thaw cycles.
Buffer	50mM Tris-Glycine(pH 7.4), 0.15M NaCl, 40% Glycerol, 0.01% Sodium azide and 0.05% BSA
Purification	Affinity Purified

Immunogen

Gene Name	ASH2L
Alternative Names	ASH2; Bre2; ASH2L1; ASH2L2
Gene ID	9070
SwissProt ID	Q9UBL3

Application

Dilution Ratio	WB: 1/500-1/1000 IF: 1/50-1/200 IP: 1/20
Molecular Weight	Calculated MW: 69 kDa; Observed MW: 80 kDa

Background

Product Name: ASH2L Rabbit Monoclonal Antibody
Catalog #: AMRe01469

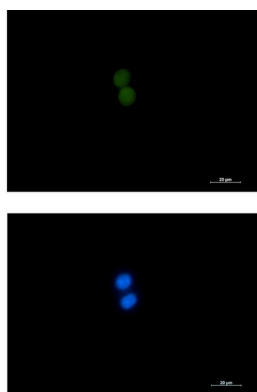


Component of the Set1/Ash2 histone methyltransferase (HMT) complex, a complex that specifically methylates 'Lys-4' of histone H3, but not if the neighboring 'Lys-9' residue is already methylated. As part of the MLL1/MLL complex it is involved in methylation and dimethylation at 'Lys-4' of histone H3. May function as a transcriptional regulator. May play a role in hematopoiesis.

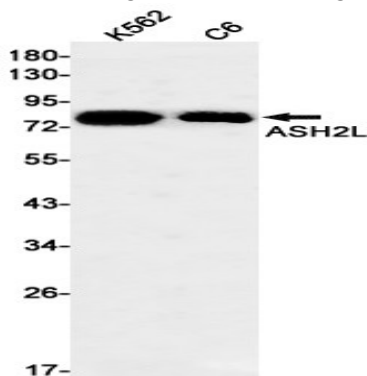
Research Area

Epigenetics and Nuclear Signaling

Image Data



Immunocytochemistry analysis of ASH2L (green) in K562 using ASH2L antibody, and DAPI (blue).



Western blot analysis of ASH2L in K562, C6 lysates using ASH2L antibody.

Note

For research use only.