

Summary

Production Name	SLP2 Rabbit Monoclonal Antibody
Description	Recombinant Rabbit Monoclonal antibody
Host	Rabbit
Application	WB,ICC/IF,IP
Reactivity	Human,Mouse,Rat

Performance

Conjugation	Unconjugated
Modification	Unmodified
Isotype	IgG
Clonality	Monoclonal Antibody
Form	Liquid
Storage	Store at 4°C short term. Aliquot and store at -20°C long term. Avoid freeze/thaw cycles.
Buffer	50mM Tris-Glycine(pH 7.4), 0.15M NaCl, 40% Glycerol, 0.01% Sodium azide and 0.05% BSA
Purification	Affinity Purified

Immunogen

Gene Name	STOML2
Alternative Names	stomatin like 2; SLP-2; HSPC108
Gene ID	30968
SwissProt ID	Q9UJZ1

Application

Dilution Ratio	WB: 1/500-1/1000 IF: 1/50-1/200 IP: 1/20
Molecular Weight	Calculated MW: 39 kDa; Observed MW: 39 kDa

Background

Product Name: SLP2 Rabbit Monoclonal Antibody
Catalog #: AMRe01468

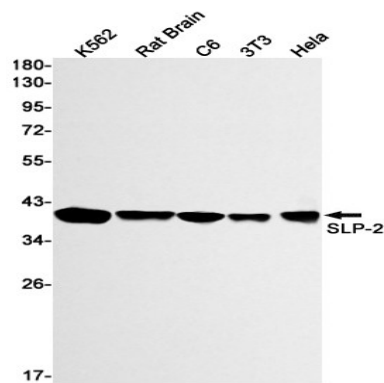


Mitochondrial protein that probably regulates the biogenesis and the activity of mitochondria.

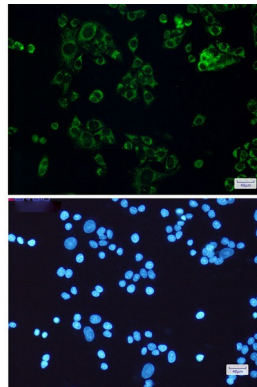
Research Area

Cancer

Image Data



Western blot analysis of SLP2 in K562, rat Brain, C6, 3T3, HeLa lysates using SLP2 antibody.



Immunocytochemistry analysis of SLP2(green) in HeLa using SLP2 antibody, and DAPI(blue)

Note

For research use only.