

**Product Name: Fructose 6 Phosphate Kinase Rabbit
Monoclonal Antibody
Catalog #: AMRe01466**

Summary

Production Name	Fructose 6 Phosphate Kinase Rabbit Monoclonal Antibody
Description	Recombinant Rabbit Monoclonal antibody
Host	Rabbit
Application	WB,ICC/IF
Reactivity	Human,Mouse,Rat

Performance

Conjugation	Unconjugated
Modification	Unmodified
Isotype	IgG
Clonality	Monoclonal Antibody
Form	Liquid
Storage	Store at 4°C short term. Aliquot and store at -20°C long term. Avoid freeze/thaw cycles.
Buffer	50mM Tris-Glycine(pH 7.4), 0.15M NaCl, 40% Glycerol, 0.01% Sodium azide and 0.05% BSA
Purification	Affinity Purified

Immunogen

Gene Name	PFKM
Alternative Names	GSD7; PFK1; PFKA; PFKX; PFK-1; Phosphohexokinase
Gene ID	5213
SwissProt ID	P08237

Application

Dilution Ratio	WB: 1/500-1/1000 IF: 1/50-1/200
Molecular Weight	Calculated MW: 85 kDa; Observed MW: 85 kDa

Product Name: Fructose 6 Phosphate Kinase Rabbit Monoclonal Antibody
Catalog #: AMRe01466

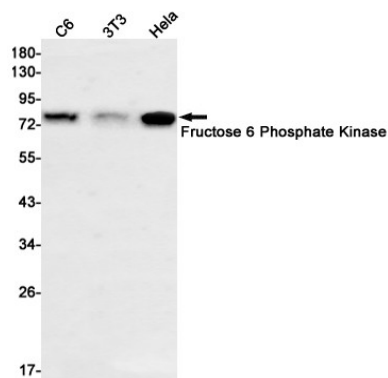
Background

Carbohydrate degradation; glycolysis; D-glyceraldehyde 3-phosphate and glycerone phosphate from D-glucose: step 3/4.

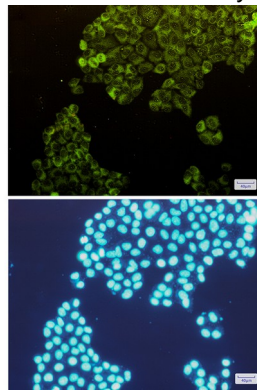
Research Area

Signal Transduction

Image Data



Western blot analysis of Fructose 6 Phosphate Kinase in C6, 3T3, HeLa lysates using Fructose 6 Phosphate Kinase antibody.



Immunocytochemistry analysis of Fructose 6 Phosphate Kinase (green) in HeLa using Fructose 6 Phosphate Kinase antibody, and DAPI (blue)

Note

For research use only.