

## Summary

<b>Production Name</b>	P2Y6 Rabbit Monoclonal Antibody
<b>Description</b>	Recombinant Rabbit Monoclonal antibody
<b>Host</b>	Rabbit
<b>Application</b>	WB,IHC-F,IHC-P,ICC/IF,IP
<b>Reactivity</b>	Human

## Performance

<b>Conjugation</b>	Unconjugated
<b>Modification</b>	Unmodified
<b>Isotype</b>	IgG
<b>Clonality</b>	Monoclonal Antibody
<b>Form</b>	Liquid
<b>Storage</b>	Store at 4°C short term. Aliquot and store at -20°C long term. Avoid freeze/thaw cycles.
<b>Buffer</b>	50mM Tris-Glycine(pH 7.4), 0.15M NaCl, 40% Glycerol, 0.01% Sodium azide and 0.05% BSA
<b>Purification</b>	Affinity Purified

## Immunogen

<b>Gene Name</b>	P2RY6
<b>Alternative Names</b>	P2ry6; P2Y6; P2Y6 receptor; PP2891
<b>Gene ID</b>	5031
<b>SwissProt ID</b>	Q15077

## Application

<b>Dilution Ratio</b>	WB: 1/500-1/1000 IHC: 1/50-1/100 IF: 1/50-1/200 IP: 1/20
<b>Molecular Weight</b>	Calculated MW: 36 kDa; Observed MW: 36 kDa

## Background

**Product Name: P2Y6 Rabbit Monoclonal Antibody**  
**Catalog #: AMRe01456**

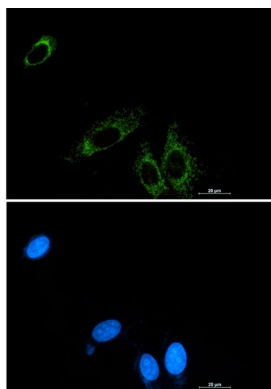


Receptor for extracellular UDP > UTP > ATP. The activity of this receptor is mediated by G proteins which activate a phosphatidylinositol-calcium second messenger system.

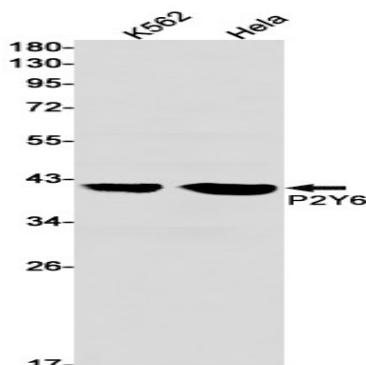
## Research Area

Signal Transduction

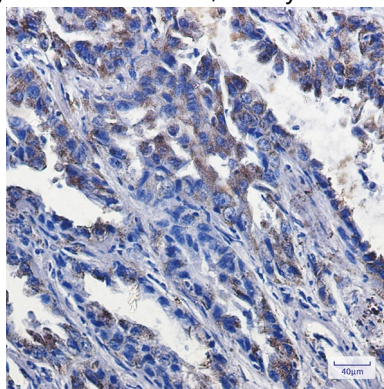
## Image Data



Immunocytochemistry analysis of P2Y6 (green) in A549 using P2Y6 antibody, and DAPI (blue).



Western blot analysis of P2Y6 in K562, HeLa lysates using P2Y6 antibody.



Immunohistochemistry analysis of paraffin-embedded Human lung cancer tissue using P2Y6 antibody. High-pressure and temperature Sodium Citrate pH 6.0 was used for antigen retrieval.

**Product Name: P2Y6 Rabbit Monoclonal Antibody**  
**Catalog #: AMRe01456**

---



**Note**

For research use only.