

**Product Name: Hsp90 alpha Rabbit Monoclonal Antibody**  
**Catalog #: AMRe01454**

---

## Summary

<b>Production Name</b>	Hsp90 alpha Rabbit Monoclonal Antibody
<b>Description</b>	Recombinant Rabbit Monoclonal antibody
<b>Host</b>	Rabbit
<b>Application</b>	WB
<b>Reactivity</b>	Human,Rat

## Performance

<b>Conjugation</b>	Unconjugated
<b>Modification</b>	Unmodified
<b>Isotype</b>	IgG
<b>Clonality</b>	Monoclonal Antibody
<b>Form</b>	Liquid
<b>Storage</b>	Store at 4°C short term. Aliquot and store at -20°C long term. Avoid freeze/thaw cycles.
<b>Buffer</b>	50mM Tris-Glycine(pH 7.4), 0.15M NaCl, 40% Glycerol, 0.01% Sodium azide and 0.05% BSA
<b>Purification</b>	Affinity Purified

## Immunogen

<b>Gene Name</b>	HSP90AA1
<b>Alternative Names</b>	HSP90AA1; HSP90A; HSPC1; HSPCA; Heat shock protein HSP 90-alpha; Heat shock 86 kDa; HSP 86; HSP86; Renal carcinoma antigen NY-REN-38
<b>Gene ID</b>	3320
<b>SwissProt ID</b>	P07900

## Application

<b>Dilution Ratio</b>	WB: 1/500-1/1000
<b>Molecular Weight</b>	Calculated MW: 85 kDa; Observed MW: 90 kDa

**Product Name: Hsp90 alpha Rabbit Monoclonal Antibody**  
**Catalog #: AMRe01454**

---

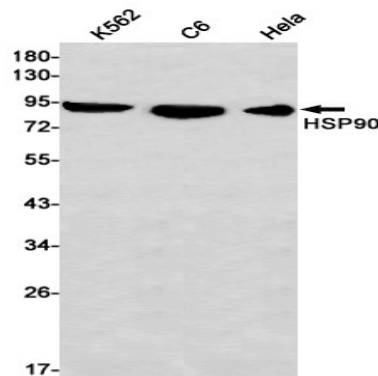
## Background

HSP90A a molecular chaperone of the heat shock protein 90 family. Has ATPase activity. Known to interact with a wide variety of proteins including steroid hormone receptors, neuropeptide Y, FKBP51/54, and FKBP52. G protein-coupled receptor kinases are stabilized by interacting with HSP 90. Hsp70 and Hsp90 promote tau solubility and tau binding to microtubules, reducing insoluble tau.

## Research Area

Signal Transduction

## Image Data



Western blot analysis of HSP90 in K562, C6, HeLa lysates using Hsp90 alpha antibody.

## Note

For research use only.