

## Summary

<b>Production Name</b>	COPS8 Rabbit Monoclonal Antibody
<b>Description</b>	Recombinant Rabbit Monoclonal antibody
<b>Host</b>	Rabbit
<b>Application</b>	WB,IHC-F,IHC-P,ICC/IF,IP
<b>Reactivity</b>	Human,Mouse,Rat

## Performance

<b>Conjugation</b>	Unconjugated
<b>Modification</b>	Unmodified
<b>Isotype</b>	IgG
<b>Clonality</b>	Monoclonal Antibody
<b>Form</b>	Liquid
<b>Storage</b>	Store at 4°C short term. Aliquot and store at -20°C long term. Avoid freeze/thaw cycles.
<b>Buffer</b>	50mM Tris-Glycine(pH 7.4), 0.15M NaCl, 40% Glycerol, 0.01% Sodium azide and 0.05% BSA
<b>Purification</b>	Affinity Purified

## Immunogen

<b>Gene Name</b>	COPS8
<b>Alternative Names</b>	COP9 signalosome subunit 8; COP9; CSN8; SGN8
<b>Gene ID</b>	10920
<b>SwissProt ID</b>	Q99627

## Application

<b>Dilution Ratio</b>	WB: 1/500-1/1000 IHC: 1/50-1/100 IF: 1/50-1/200 IP: 1/20
<b>Molecular Weight</b>	Calculated MW: 23 kDa; Observed MW: 23 kDa

## Background

**Product Name: COPS8 Rabbit Monoclonal Antibody**  
**Catalog #: AMRe01451**

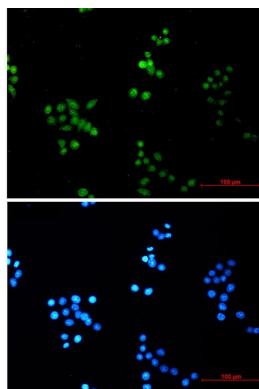


Component of the COP9 signalosome complex (CSN), a complex involved in various cellular and developmental processes.

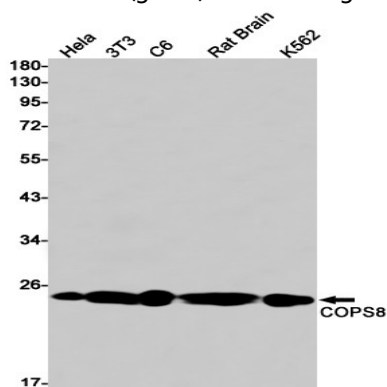
## Research Area

Immunology

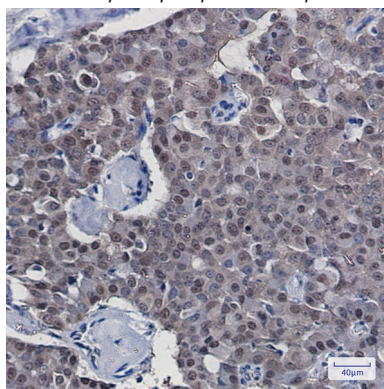
## Image Data



Immunocytochemistry analysis of COPS8 (green) in HeLa using COPS8 antibody, and DAPI (blue).



Western blot analysis of COPS8 in HeLa, 3T3, C6, rat Brain, K562 lysates using COPS8 antibody.



Immunohistochemistry analysis of paraffin-embedded Human breast cancer tissue using COPS8 antibody. High-pressure and temperature Sodium Citrate pH 6.0 was used for antigen retrieval.

**Product Name: COPS8 Rabbit Monoclonal Antibody**  
**Catalog #: AMRe01451**

---



**Note**

For research use only.