
Summary

Production Name	PPP4C Rabbit Monoclonal Antibody
Description	Recombinant Rabbit Monoclonal antibody
Host	Rabbit
Application	WB
Reactivity	Human,Mouse,Rat

Performance

Conjugation	Unconjugated
Modification	Unmodified
Isotype	IgG
Clonality	Monoclonal Antibody
Form	Liquid
Storage	Store at 4°C short term. Aliquot and store at -20°C long term. Avoid freeze/thaw cycles.
Buffer	50mM Tris-Glycine(pH 7.4), 0.15M NaCl, 40% Glycerol, 0.01% Sodium azide and 0.05% BSA
Purification	Affinity Purified

Immunogen

Gene Name	PPP4C
Alternative Names	PP4; PPX; PP4C; PPH3; PPP4
Gene ID	5531
SwissProt ID	P60510

Application

Dilution Ratio	WB: 1/500-1/1000
Molecular Weight	Calculated MW: 35 kDa; Observed MW: 35 kDa

Background

Product Name: PPP4C Rabbit Monoclonal Antibody
Catalog #: AMRe01448

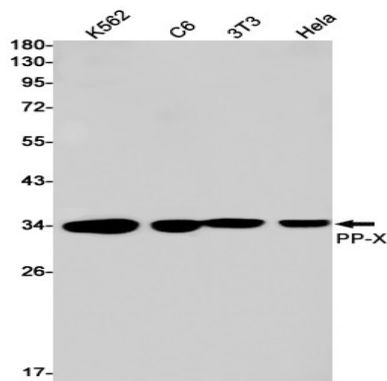


In eukaryotes, the phosphorylation and dephosphorylation of proteins on serine and threonine residues is an essential means of regulating a broad range of cellular functions, including division, homeostasis and apoptosis. A group of proteins that are intimately involved in this process are the protein phosphatases. In general, the protein phosphatase (PP) holoenzyme is a trimeric complex composed of a regulatory subunit, a variable subunit and a catalytic subunit. Four major families of protein phosphatase catalytic subunits have been identified, designated PP1, PP2A, PP2B (calcineurin) and PP2C. An additional protein phosphatase catalytic subunit, PPX (also known as PP4) is a putative member of a novel PP family.

Research Area

Signal Transduction

Image Data



Western blot analysis of PPX in K562, C6, 3T3, HeLa lysates using PPP4C antibody.

Note

For research use only.