
Summary

Production Name	WTAP Rabbit Monoclonal Antibody
Description	Recombinant Rabbit Monoclonal antibody
Host	Rabbit
Application	WB,IHC-P,IP
Reactivity	Human

Performance

Conjugation	Unconjugated
Modification	Unmodified
Isotype	IgG
Clonality	Monoclonal Antibody
Form	Liquid
Storage	Store at 4°C short term. Aliquot and store at -20°C long term. Avoid freeze/thaw cycles.
Buffer	50mM Tris-Glycine(pH 7.4), 0.15M NaCl, 40% Glycerol, 0.01% Sodium azide and 0.05% BSA
Purification	Affinity Purified

Immunogen

Gene Name	WTAP
Alternative Names	hFL(2)D; WT1-associated protein; Wilms tumor 1-associating protein; Pre-mRNA-splicing regulator WTAP
Gene ID	9589
SwissProt ID	Q15007

Application

Dilution Ratio	WB: 1/500-1/1000 IHC: 1/50-1/100 IP: 1/20
Molecular Weight	Calculated MW: 44 kDa; Observed MW: 55 kDa

Product Name: WTAP Rabbit Monoclonal Antibody
Catalog #: AMRe01443



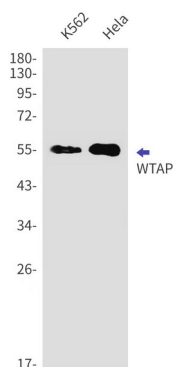
Background

The Wilms tumor suppressor gene WT1 appears to play a role in both transcriptional and posttranscriptional regulation of certain cellular genes. This gene encodes a WT1-associating protein, which is a ubiquitously expressed nuclear protein. Like WT1 protein, this protein is localized throughout the nucleoplasm as well as in speckles and partially colocalizes with splicing factors. Alternative splicing of this gene results in several transcript variants encoding three different isoforms.

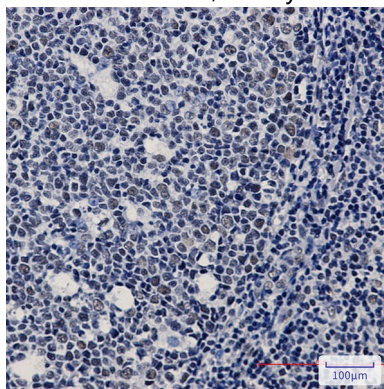
Research Area

Epigenetics and Nuclear Signaling

Image Data



Western blot analysis of WTAP in K562, HeLa lysates using WTAP antibody.



Immunohistochemistry analysis of paraffin-embedded Human tonsil using WTAP antibody. High-pressure and temperature Sodium Citrate pH 6.0 was used for antigen retrieval.

Note

For research use only.