
Summary

Production Name	CENPA Rabbit Monoclonal Antibody
Description	Recombinant Rabbit Monoclonal antibody
Host	Rabbit
Application	WB
Reactivity	Human

Performance

Conjugation	Unconjugated
Modification	Unmodified
Isotype	IgG
Clonality	Monoclonal Antibody
Form	Liquid
Storage	Store at 4°C short term. Aliquot and store at -20°C long term. Avoid freeze/thaw cycles.
Buffer	50mM Tris-Glycine(pH 7.4), 0.15M NaCl, 40% Glycerol, 0.01% Sodium azide and 0.05% BSA
Purification	Affinity Purified

Immunogen

Gene Name	CENPA
Alternative Names	Centromere autoantigen A; Centromere protein A; CENP-A
Gene ID	1058
SwissProt ID	P49450

Application

Dilution Ratio	WB: 1/500-1/1000
Molecular Weight	Calculated MW: 16 kDa; Observed MW: 16 kDa

Background

Product Name: CENPA Rabbit Monoclonal Antibody
Catalog #: AMRe01442

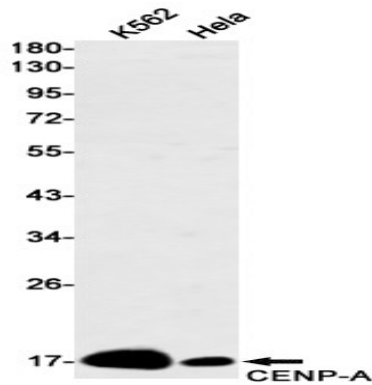


Histone H3-like nucleosomal protein that is specifically found in centromeric nucleosomes.

Research Area

Epigenetics and Nuclear Signaling

Image Data



Western blot analysis of CENPA in K562, HeLa lysates using CENPA antibody.

Note

For research use only.