

## Summary

<b>Production Name</b>	Presenilin 2 Rabbit Monoclonal Antibody
<b>Description</b>	Recombinant Rabbit Monoclonal antibody
<b>Host</b>	Rabbit
<b>Application</b>	WB,IP
<b>Reactivity</b>	Human,Mouse,Rat

## Performance

<b>Conjugation</b>	Unconjugated
<b>Modification</b>	Unmodified
<b>Isotype</b>	IgG
<b>Clonality</b>	Monoclonal Antibody
<b>Form</b>	Liquid
<b>Storage</b>	Store at 4°C short term. Aliquot and store at -20°C long term. Avoid freeze/thaw cycles.
<b>Buffer</b>	50mM Tris-Glycine(pH 7.4), 0.15M NaCl, 40% Glycerol, 0.01% Sodium azide and 0.05% BSA
<b>Purification</b>	Affinity Purified

## Immunogen

<b>Gene Name</b>	PSEN2
<b>Alternative Names</b>	AD3LP; AD5; E5-1; STM-2
<b>Gene ID</b>	5664
<b>SwissProt ID</b>	P49810

## Application

<b>Dilution Ratio</b>	WB: 1/500-1/1000 IP: 1/20
<b>Molecular Weight</b>	Calculated MW: 50 kDa; Observed MW: 23 kDa

## Background

---

**Product Name: Presenilin 2 Rabbit Monoclonal Antibody**  
**Catalog #: AMRe01426**

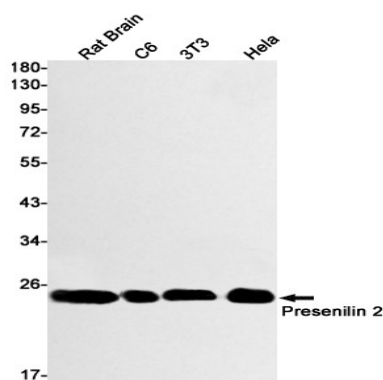


Probable catalytic subunit of the gamma-secretase complex, an endoprotease complex that catalyzes the intramembrane cleavage of integral membrane proteins such as Notch receptors and APP (amyloid-beta precursor protein).

## Research Area

Neuroscience

## Image Data



Western blot analysis of Presenilin 2 in rat Brain, C6, 3T3, HeLa lysates using Presenilin 2 antibody.

## Note

For research use only.