

## Summary

<b>Production Name</b>	UFM1 Rabbit Monoclonal Antibody
<b>Description</b>	Recombinant Rabbit Monoclonal antibody
<b>Host</b>	Rabbit
<b>Application</b>	WB,IHC-P,IP
<b>Reactivity</b>	Human,Mouse

## Performance

<b>Conjugation</b>	Unconjugated
<b>Modification</b>	Unmodified
<b>Isotype</b>	IgG
<b>Clonality</b>	Monoclonal Antibody
<b>Form</b>	Liquid
<b>Storage</b>	Store at 4°C short term. Aliquot and store at -20°C long term. Avoid freeze/thaw cycles.
<b>Buffer</b>	50mM Tris-Glycine(pH 7.4), 0.15M NaCl, 40% Glycerol, 0.01% Sodium azide and 0.05% BSA
<b>Purification</b>	Affinity Purified

## Immunogen

<b>Gene Name</b>	UFM1
<b>Alternative Names</b>	Ubiquitin-fold modifier 1; C13orf20
<b>Gene ID</b>	51569
<b>SwissProt ID</b>	P61960

## Application

<b>Dilution Ratio</b>	WB: 1/500-1/1000 IHC: 1/50-1/100 IP: 1/20
<b>Molecular Weight</b>	Calculated MW: 9 kDa; Observed MW: 9 kDa

## Background

**Product Name: UFM1 Rabbit Monoclonal Antibody**  
**Catalog #: AMRe01415**

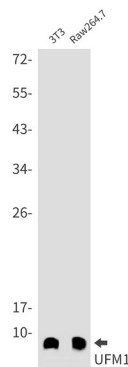


Ubiquitin-like modifier which can be covalently attached via an isopeptide bond to lysine residues of substrate proteins as a monomer or a lysine-linked polymer.

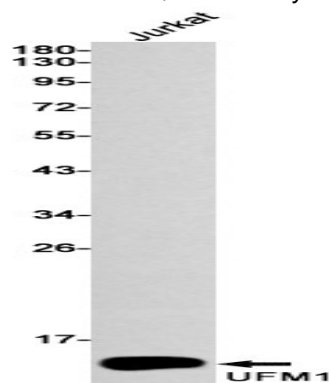
## Research Area

Cell Biology

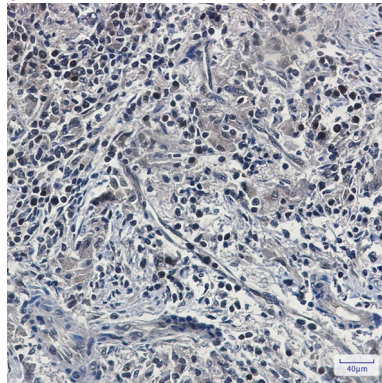
## Image Data



Western blot analysis of UFM1 in 3T3, Raw264.7 lysates using UFM1 antibody.



Western blot analysis of UFM1 in Jurkat lysates using UFM1 antibody.



Immunohistochemistry analysis of paraffin-embedded Human lung cancer using UFM1 antibody. High-pressure and temperature Sodium Citrate pH 6.0 was used for antigen retrieval.

**Product Name: UFM1 Rabbit Monoclonal Antibody**  
**Catalog #: AMRe01415**

---



**Note**

For research use only.