

**Product Name: Doublecortin Rabbit Monoclonal Antibody**  
**Catalog #: AMRe01412**

---

## Summary

<b>Production Name</b>	Doublecortin Rabbit Monoclonal Antibody
<b>Description</b>	Recombinant Rabbit Monoclonal antibody
<b>Host</b>	Rabbit
<b>Application</b>	WB
<b>Reactivity</b>	Rat

## Performance

<b>Conjugation</b>	Unconjugated
<b>Modification</b>	Unmodified
<b>Isotype</b>	IgG
<b>Clonality</b>	Monoclonal Antibody
<b>Form</b>	Liquid
<b>Storage</b>	Store at 4°C short term. Aliquot and store at -20°C long term. Avoid freeze/thaw cycles.
<b>Buffer</b>	50mM Tris-Glycine(pH 7.4), 0.15M NaCl, 40% Glycerol, 0.01% Sodium azide and 0.05% BSA
<b>Purification</b>	Affinity Purified

## Immunogen

<b>Gene Name</b>	DCX
<b>Alternative Names</b>	DCX; DBCN; LISX; Neuronal migration protein doublecortin; Doublin; Lissencephalin-X; Lis-X
<b>Gene ID</b>	1641
<b>SwissProt ID</b>	O43602

## Application

<b>Dilution Ratio</b>	WB: 1/500-1/1000
<b>Molecular Weight</b>	Calculated MW: 41 kDa; Observed MW: 41 kDa

**Product Name: Doublecortin Rabbit Monoclonal Antibody**  
**Catalog #: AMRe01412**

---

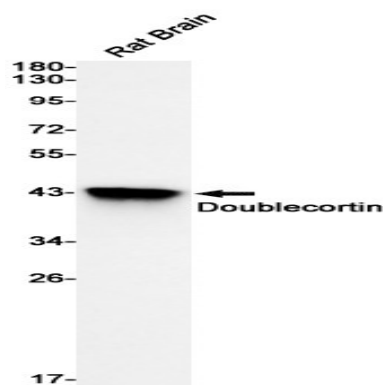
## Background

Mutations in Doublecortin cause Lissencephaly (smooth brain), a neuronal migration disorder characterized by epilepsy and mental retardation. Doublecortin is a microtubule associated protein that stabilizes and bundles microtubules. A conserved doublecortin domain mediates the interaction with microtubules, and interestingly most missense mutations cluster in this domain.

## Research Area

Cell Biology

## Image Data



Western blot analysis of Doublecortin in rat Brain lysates using Doublecortin antibody.

## Note

For research use only.