

Summary

Production Name	MCM3 Rabbit Monoclonal Antibody
Description	Recombinant Rabbit Monoclonal antibody
Host	Rabbit
Application	WB,IHC-F,IHC-P,ICC/IF
Reactivity	Human,Rat

Performance

Conjugation	Unconjugated
Modification	Unmodified
Isotype	IgG
Clonality	Monoclonal Antibody
Form	Liquid
Storage	Store at 4°C short term. Aliquot and store at -20°C long term. Avoid freeze/thaw cycles.
Buffer	50mM Tris-Glycine(pH 7.4), 0.15M NaCl, 40% Glycerol, 0.01% Sodium azide and 0.05% BSA
Purification	Affinity Purified

Immunogen

Gene Name	MCM3
Alternative Names	MCM3; HCC5; P1-MCM3; P1.h; RLFb
Gene ID	4172
SwissProt ID	P25205

Application

Dilution Ratio	WB: 1/500-1/1000 IHC: 1/50-1/100 IF: 1/50-1/200
Molecular Weight	Calculated MW: 91 kDa; Observed MW: 100 kDa

Background

Product Name: MCM3 Rabbit Monoclonal Antibody
Catalog #: AMRe01409

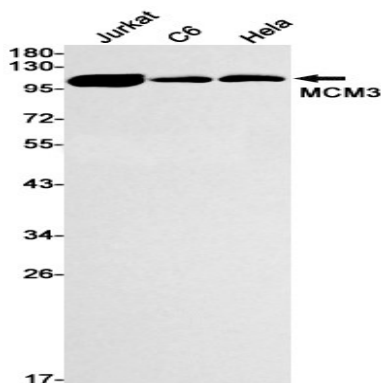


Acts as component of the MCM2-7 complex (MCM complex) which is the putative replicative helicase essential for 'once per cell cycle' DNA replication initiation and elongation in eukaryotic cells.

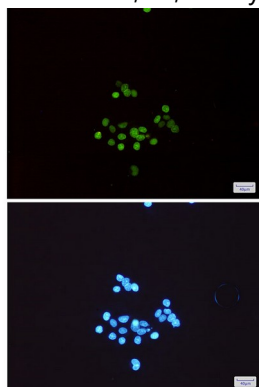
Research Area

Epigenetics and Nuclear Signaling

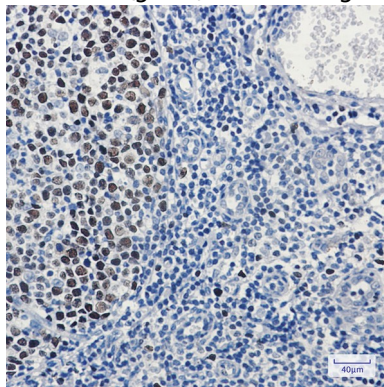
Image Data



Western blot analysis of MCM3 in Jurkat, C6, HeLa lysates using MCM3 antibody.



Immunocytochemistry analysis of MCM3(green) in HeLa using MCM3 antibody, and DAPI(blue)



Immunohistochemistry analysis of paraffin-embedded Human tonsil using MCM3 antibody. High-pressure and temperature Sodium Citrate pH 6.0 was used for antigen retrieval.

Product Name: MCM3 Rabbit Monoclonal Antibody
Catalog #: AMRe01409



Note

For research use only.