

**Product Name: Rabbit IgG (Light Chain Specific)
(8D6)Mouse Mouse Monoclonal Antibody
Catalog #: AMM16813**

Summary

Production Name	Rabbit IgG (Light Chain Specific)(8D6)Mouse Mouse Monoclonal Antibody
Description	Mouse Monoclonal Antibody
Host	Mouse
Application	WB,ELISA
Reactivity	Rabbit

Performance

Conjugation	Unconjugated
Modification	Unmodified
Isotype	IgG
Clonality	Monoclonal
Form	Liquid
Storage	Store at 4°C short term. Aliquot and store at -20°C long term. Avoid freeze/thaw cycles.
Buffer	PBS, pH 7.4, containing 0.5%BSA, 0.02% New type preservative N as Preservative and 50% Glycerol.
Purification	Affinity purification

Immunogen

Gene Name	
Alternative Names	
Gene ID	
SwissProt ID	.Recombinant Protein of Rabbit IgG (Light Chain Specific)

Application

Dilution Ratio	WB 1:2000-5000
Molecular Weight	25kD

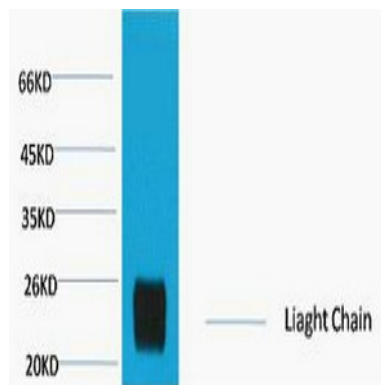
Background

**Product Name: Rabbit IgG (Light Chain Specific)
(8D6) Mouse Monoclonal Antibody
Catalog #: AMM16813**

Whole IgG antibodies are isolated as intact molecules from antisera by immunoaffinity chromatography. They have an Fc portion and two antigen binding Fab portions joined together by disulfide bonds and therefore they are divalent. The average molecular weight is reported to be about 160 kDa. The Light Chain Specific antibody reacts with light chain of IgG but not with the heavy chain of IgG.

Research Area

Image Data



Western blot analysis of Reduced Rabbit IgG, H+L, diluted at 1:10000.

Note

For research use only.