

**Product Name: Rabbit IgG (Fc specific, Heavy Chain)  
(1E1)Mouse Mouse Monoclonal Antibody  
Catalog #: AMM16811**

---



## Summary

<b>Production Name</b>	Rabbit IgG (Fc specific, Heavy Chain)(1E1)Mouse Mouse Monoclonal Antibody
<b>Description</b>	Mouse Monoclonal Antibody
<b>Host</b>	Mouse
<b>Application</b>	WB,ELISA
<b>Reactivity</b>	Rabbit

## Performance

<b>Conjugation</b>	Unconjugated
<b>Modification</b>	Unmodified
<b>Isotype</b>	IgG
<b>Clonality</b>	Monoclonal
<b>Form</b>	Liquid
<b>Storage</b>	Store at 4°C short term. Aliquot and store at -20°C long term. Avoid freeze/thaw cycles.
<b>Buffer</b>	PBS, pH 7.4, containing 0.5%BSA, 0.02% New type preservative N as Preservative and 50% Glycerol.
<b>Purification</b>	Affinity purification

## Immunogen

<b>Gene Name</b>	
<b>Alternative Names</b>	
<b>Gene ID</b>	
<b>SwissProt ID</b>	.Recombinant Protein of Rabbit IgG (Fc specific, Heavy Chain)

## Application

<b>Dilution Ratio</b>	WB 1:2000-5000
<b>Molecular Weight</b>	55kD

## Background

---

**Product Name: Rabbit IgG (Fc specific, Heavy Chain)  
(1E1)Mouse Mouse Monoclonal Antibody  
Catalog #: AMM16811**

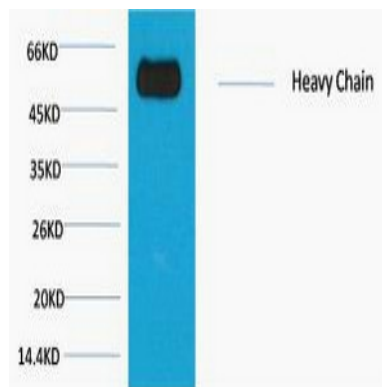
---



Whole IgG antibodies are isolated as intact molecules from antisera by immunoaffinity chromatography. They have an Fc portion and two antigen binding Fab portions joined together by disulfide bonds and therefore they are divalent. The average molecular weight is reported to be about 160 kDa. The Fc specific, Heavy Chain antibody reacts with the Fc portion of IgG heavy chain but not with the Fab portion of IgG.

## Research Area

## Image Data



Western blot analysis of Reduced Rabbit IgG, H+L, diluted at 1:10000.

## Note

For research use only.